

PRICES AND TERMS / APRIL 2012



AQUARIUM & AQUACULTURE



POND, FOUNTAIN & WATER GARDEN



TERMS AND PRICES — 2012

Prices, Freight Policy and Terms: All subject to change without notice.

Terms of Sale: C.O.D. (unless otherwise agreed in writing), subject to terms of money order, or cashiers check. VISA and MasterCard also accepted. On credit approved accounts, Net 30 Days. When terms are other than cash, all past due balances are subject to an interest charge of 1½% per month.

Domestic Freight Terms: All shipments are F.O.B. Cerritos, California. On shipments of \$3000 or more, freight prepaid in the Continental USA only. NOTE: We never pay C.O.D. charges. If you require a **24 hour advance truckline notification**, a \$25.00 net charge will be added to your invoice.

Export Freight Terms: All freight charges to be paid by consignee.

We reserve the right to ship by the best possible means to ensure your orders will be delivered in the most economical way.

OS = OVERSIZE. These items are considered oversize by **UPS**.

The carrier who delivers merchandise to your door is responsible for loss and damages. At time of delivery, all cartons received should be checked against the number on the bill of lading and if there are any discrepancies, it should be so noted on the bill of lading. Shortages should be directly reported to the transportation company. Factory shortages must be reported to us within 10 days. Supporting documents must accompany each request.

Minimum orders: We will be unable to accept orders totaling less than \$25.00.

Return of Merchandise: No merchandise will be accepted for credit or replacement without prior factory approval. **YOU MUST CALL OR WRITE FOR RETURN AUTHORIZATION BEFORE SHIPPING.** Return merchandise must be sent back Freight Prepaid and is subject to 15% handling charge. **Please send copy of invoice with returned merchandise.**

SHIP to: Lifegard Aquatics, 13911 Struikman Road, Cerritos, CA 90703

WARRANTY POLICY

- Warranty period starts from date of purchase and must be validated with copy of original purchase receipt.
- Warranty requests by phone will not be honored.
- Warranty items returned without copy of original purchase receipt will not be honored.
- Products purchased from EBay, Craig's List, etc. cannot be honored for warranty unless returned by original purchaser with proof of purchase.
- All items must first be returned to Lifegard Aquatics for inspection, evaluation, and processing to determine if product qualifies for warranty replacement or repair. No warranty (repair, replacement, or credit) will be issued prior to inspection of product.
- **Please contact us first for warranty assistance. Many times the product can be repaired without the cost and time involved in sending it back to us.** If absolutely necessary, return product **freight prepaid** to the following address for warranty evaluation and processing.
- **3 year warranty** from date of purchase on **Quiet One Pump Motors Only**.
- **60 day warranty** from date of purchase on **Shafts and Impellers for All Types of Pumps**.
- **60 day warranty** from date of purchase on all **Ultraviolet Bulbs**.
- **60 day warranty** from date of purchase on all **Test Strips**.
- **1 year warranty** from date of purchase on **All Other Products**.

Lifegard Aquatics, 13911 Struikman Road, Cerritos, CA 90703

Tel (562) 404-4129 • Fax (562) 404-4159 • Email info@lifegardaquatics.com



13911 Struikman Road, Cerritos, CA 90703

(562) 404-4129 • (800) 628-8771 • FAX (562) 404-4159 • FAX (800) 424-1445

www.lifegardaquatics.com E-mail: info@lifegardaquatics.com

LIFEGARD® is a registered trademark of Lifegard Aquatics

TABLE OF CONTENTS

AQUARIUM FILTERS

AquaStep® PRO Sterilizer	7
RTL and M-Series Commercial Cartridge Filters	8
Fluidized Bed Filters	6
Horizontal Modular Kits	5
Lifeguard® Filter Modules	4
M-Series Commercial	8
Modular System Packs	6
Lifeguard® Modular UV Sterilizers	5
Sand Filters	9
WOW™ Multi-Function Filter	8

AQUARIUM ACCESSORIES

Algae Pads	11
AquaMesh™ Filter Media	10
BioMate® Media Balls	10
Bonded Filter Pad	10
Cartridges	8
Carbon, Pelletized Activated	10
CustomFlo® Water System	12
Digital Thermometers	11
Drain, Return Kits	10
Fish Feeder	9
Intelli-Feed™ Fish Feeder	9
LED Thermometer	11
Scratch Removal Kit	10
Scrubbers	10
Service Cart Parts Kit	22
Test Strips	11
Underwater River	11
UV Bulbs	6

PUMPS

Air Pumps w/wo LED	11, 19
Caged Pond Pumps	17
Commercial Self-Priming Pumps	16
2-Speed Pump	16
Dirty Water Submersible Pumps	17
Fountain Pumps	14
Lifeguard® Quiet-One® Pumps Original Series	13
Lifeguard® Quiet-One® Pumps PRO Series	14
Protein Skimmer Pumps	14
Utility Pumps	17

FITTINGS AND VALVES

Airline Bulkhead Kit	20
Airline Tubing	21
Bulkhead Fittings	20-21
Fittings and Adapters	20-21
Flexible Ball-Joint Fittings	22
Hose Bib	21
Hose Clamp	20
Metric Fittings	21
Multi-Port Valves	9
Silicone Lubricant	21
Thread Seal Tape	21
Valves	21

POND FILTERS

All-In-One® Submersible	17
Uno, Duo, Trio® Filters	18
Uno, Duo, Trio® Filter/Pump Kits	18
Tarpon Pond Filters	18

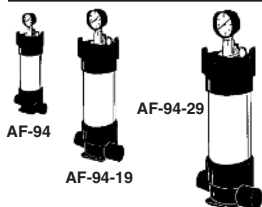
POND ACCESSORIES

Air Pump	11, 19
Brushes, Nets, Skimmers	19
Leaf Eater®	19
Min-Vac®	19
Telescopic Poles	19
Test Strips	11
Thermometers	19

REPLACEMENT PARTS

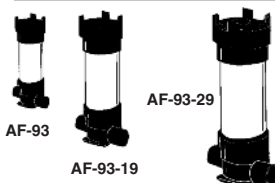
All-In-One® Pond Filter	17
AquaStep® PRO UV Sterilizer	7
CustomFlo® Water System	12
Fish Feeder	9
Intelli-Feed Fish Feeder	9
Fluidized Bed Filter	6
Lifeguard® UV Sterilizers	5
Lifeguard® Quiet-One® Pumps Original Series	13
Lifeguard® Quiet-One® Pumps PRO Series	15
Replacement Cartridges	8
Service Cart Parts Kit	22
UV Replacement Bulbs	6
Lifeguard Filter Modules®	4
WOW Multi-Function Filter	8

MECHANICAL FILTER MODULES



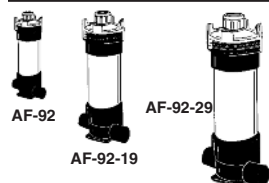
Part Number	UPC 788379+	Model Number	Description	Inlet Port	Port Size	Outlet Port	Filter Height	Dimensions Width	Depth	Std. Carton	Shipping Weight	List Price
R179410	303594	AF-94	Individual Module	1 1/4" Slip/3/4" FPT	1"	Slip/3/4" FPT	14"	7"	4 3/4"	4	18 lbs.	80.18
R179420	303723	AF-94-19	Double Capacity Module	1 1/4" Slip/3/4" FPT	1"	Slip/3/4" FPT	23 3/4"	7"	4 3/4"	4	24 lbs.	95.83
R179430	303853	AF-94-29	Triple Capacity Module	1 1/4" Slip/3/4" FPT	1"	Slip/3/4" FPT	33 1/2"	7"	4 3/4"	4	35 lbs.	117.42

CHEMICAL FILTER MODULES



R179310	303402	AF-93	Individual Module	1 1/4" Slip/3/4" FPT	1"	Slip/3/4" FPT	14"	7"	4 3/4"	4	18 lbs.	75.91
R179320	303471	AF-93-19	Double Capacity Module	1 1/4" Slip/3/4" FPT	1"	Slip/3/4" FPT	23 3/4"	7"	4 3/4"	4	22 lbs.	90.91
R179330	303532	AF-93-29	Triple Capacity Module	1 1/4" Slip/3/4" FPT	1"	Slip/3/4" FPT	33 1/2"	7"	4 3/4"	4	27 lbs.	109.86

HEATER MODULES



R179210	303181	AF-92	Individual Module	1 1/4" Slip/3/4" FPT	1"	Slip/3/4" FPT	15"	7"	4 3/4"	4	15 lbs.	57.44
R179220	303273	AF-92-19	Double Capacity Module	1 1/4" Slip/3/4" FPT	1"	Slip/3/4" FPT	24 3/4"	7"	4 3/4"	4	19 lbs.	65.64
R179230	303341	AF-92-29	Triple Capacity Module	1 1/4" Slip/3/4" FPT	1"	Slip/3/4" FPT	34 1/2"	7"	4 3/4"	4	23 lbs.	80.02

NOTES: Slip = PVC Solvent Socket type Fittings
FPT = Female Pipe Thread.

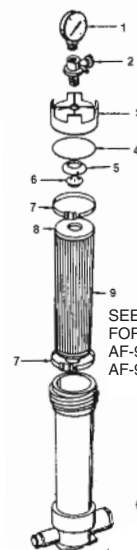
*Height without Gauge. With Gauge add 4".

LIFEGARD AF-94, AF-93, AF-92 MODULE PARTS (ALL VERSIONS)

Item No.	Part No.	UPC 788379+	Description	Std. Carton	Shpg. Wgt.	List Price
1	*R172045BX	300449	0-30 Gauge bottom mount (1 per poly bag)	24	6 lbs.	11.67
2	*R172045AX	300425	Gauge adapter and air bleed (1 per poly bag)	24	2 lbs.	9.01
3	*R172012X	306953	3" Cap w/1/4" NPT hole (1 per poly bag)	24	13 lbs.	10.54
4	*220001	300357	"O" Ring for 3" cap (1 per poly bag)	24	1 lb.	2.75
5	*R172043X	300418	Cup spring (1 per poly bag)	24	2 lbs.	3.47
6	*R172014X	300371	Cartridge plug (1 per poly bag)	24	1 lb.	3.77
7	*R175028X	301224	Pleat retainer (2 per poly bag)	24	2 lbs.	5.98
8	*R175024X	301149	Combination cartridge (1 per poly bag)	24	15 lbs.	24.77
9	*R175026X	301194	PL-9 pleat (2 per poly bag)	280	17 lbs.	5.87
10	*R270313	303952	Nipple 3/4" close for threaded modules	25	2 lbs.	1.23
10A	*R270484	304713	1" MPT x Close Nipple	25	2 lbs.	1.47
11	*R175025X	301170	Cartridge CL9A (2 req. for AF94-19 and 3 req. for AF94-29) (1 per poly bag)	24	11 lbs.	18.20
12	R172005	500153	9 3/4" Standpipe	24	5 lbs.	11.00
12A	R172018	500269	19" Standpipe (for AF94-19 only)	24	8 lbs.	13.00
13	R172017	500252	29" Standpipe (for AF94-29 only)	24	9 lbs.	14.00
14	*R172008X	300333	3" Solid cap (1 per poly bag)	24	12 lbs.	13.00
15	R175056	301408	Retainer cap for ALL carbon chambers	24	2 lbs.	1.84
16	R175029	306984	9" Chemical retainer chamber	24	13 lbs.	37.05
17	R175054	306991	19" Chemical retainer chamber	24	21 lbs.	56.48
18	R175055	307004	29" Chemical retainer chamber	24	30 lbs.	75.42
20	*R175021X	301095	3" Clear heater cap complete (1 per poly bag)	24	12 lbs.	28.52
21	*R175022X	301118	Small Heater gasket (1 per poly bag)	24	1 lb.	3.49
22	*R175023X	301132	Large Heater gasket (1 per poly bag)	24	1 lb.	3.57
	R174000	302061	1 1/4" x 3/4" Lifeguard Reducer Bushing			4.73
	R174001	302078	1 1/4" x 1" Lifeguard Reducer Bushing			4.60
	R174002	302085	1 1/2" x 3/4" Lifeguard Reducer Bushing			5.50
	R174003	302092	1 1/2" x 1" Lifeguard Reducer Bushing			5.25

*NOTE: All poly bagged items come complete with descriptive header for display hanging.

AF-94 MECHANICAL FILTER



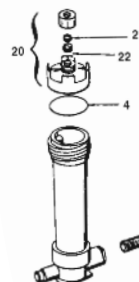
AF-93 CHEMICAL FILTER



SEE INSET FOR MODELS AF-94-19 AND AF-94-29

10 3/4" CLOSE NIPPLE
10A 1" CLOSE NIPPLE
USED TO CONNECT
THREADED MODEL MODULES

AF-92 HEATER MODULE



MODELS AF-94-19 AND AF-94-29 ONLY



11 AQUARIUM CARTRIDGE COMPLETE HAS NO CARBON RETAINER AF-94-19 (2) REQ. AF-94-29 (3) REQ.

PLEATS ARE SAME AS MODEL AF-94

CENTER STAND PIPE
12 FOR AF-94
12A FOR AF-94-19
13 FOR AF-94-29

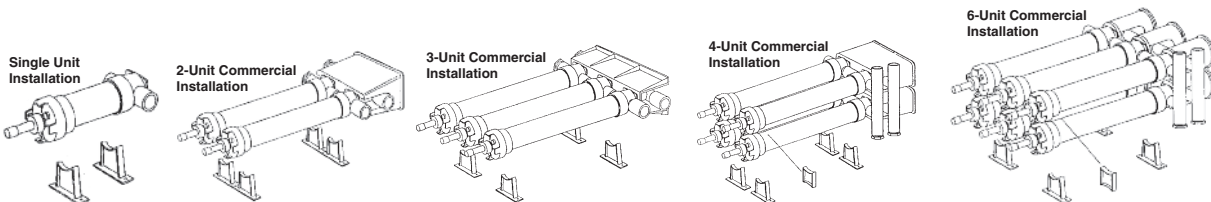
10 3/4" CLOSE NIPPLE
10A 1" CLOSE NIPPLE
USED TO CONNECT
THREADED MODEL MODULES

How to Convert a Mechanical Commercial Filter to a Chemical Commercial Filter:

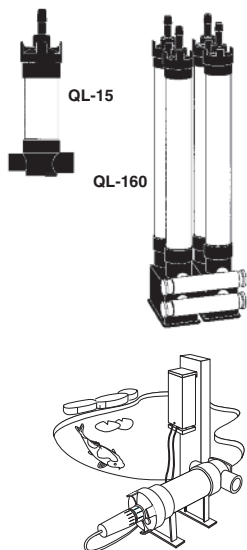
All commercial filters come with a micron cartridge and a stand pipe. To convert it to a chemical filter, remove the micron cartridge and the stand pipe. Replace it with the appropriate size and correct quantity of carbon retainer chamber, Item #: 16, 17 and 18 from the above list. **For Example: To convert an M3 Mechanical Filter (Part #R176133) to an M3 Chemical Filter. You need to purchase three (3) Carbon Retainer Chambers (Part #R175055).**

HORIZONTAL KITS

Part Number	UPC 788379+	Description	Std. Carton	Shipping Weight	List Price
Converts upright vertical units to horizontal installation.					
R179500	500467	Horizontal Kit Aquarium, For all single stack units	1	1 lbs.	13.83
R179501	500566	Horizontal Kit Commercial, For all multiple stack units	1	2 lbs.	32.72



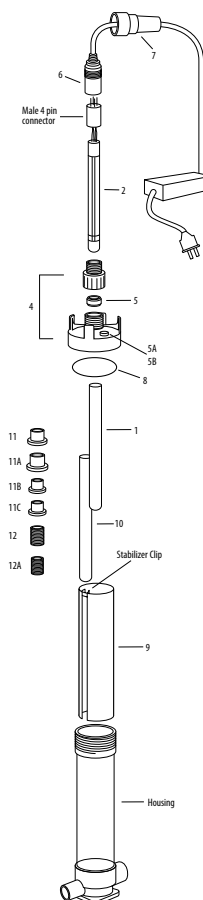
LIFEGARD ULTRAVIOLET MODULES



Part Number	UPC 788379+	Model Number	Description	Port Size		Filter Dimensions			Maint. Clear.	Std. Carton	Shipping Weight	List Price	
				Inlet Port	Outlet Port	Height	Width	Depth					
115 VOLT/60 HZ UV STERILIZERS													
R177080	302832	QL-15	15 Watt UV Module	3/4" FPT	3/4" FPT	17"	7"	4 3/4"	27"	4	24 lbs.	183.80	
R177250	302962	QL-25	25 Watt UV Module	3/4" FPT	3/4" FPT	26 3/4"	7"	4 3/4"	42 3/4"	4	46 lbs.	227.68	
R177300	303020	QL-40	40 Watt UV Module	3/4" FPT	3/4" FPT	34 1/2"	7"	4 3/4"	64 1/2"	4	52 lbs.	271.11	
R177300c	303051	QL-80	80 Watt UV Module	2" Slip	2" Slip	45 1/4"	6"	15 1/4"	75 1/4"	1	os 22 lbs.	589.88	
R177300B	303044	QL-120	120 Watt UV Module	2" Slip	2" Slip	45 1/4"	6"	22"	75 1/4"	1	os 34 lbs.	897.23	
R177304A	307288	QL-160	160 Watt UV Module	2" Slip	2" Slip	45 1/4"	11 3/4"	18"	75 1/4"	1	os 39 lbs.	1154.69	
R177305A	307295	QL-240	240 Watt UV Module	2" Slip	2" Slip	45 1/4"	11 3/4"	24"	75 1/4"	1	os 54 lbs.	1701.64	
230 VOLT/50 HZ UV STERILIZERS													
R177080E	309008	QL-15	15 Watt UV Module	3/4" FPT	3/4" FPT	17"	7"	4 3/4"	27"	4	24 lbs.	183.80	
R177250E	308490	QL-25	25 Watt UV Module	3/4" FPT	3/4" FPT	26 3/4"	7"	4 3/4"	42 3/4"	4	26 lbs.	227.68	
R177300E	308551	QL-40	40 Watt UV Module	3/4" FPT	3/4" FPT	34 1/2"	7"	4 3/4"	64 1/2"	4	52 lbs.	271.11	
R177300cE	308605	QL-80	80 Watt UV Module	2" Slip	2" Slip	45 1/4"	6"	15 1/4"	75 1/4"	1	os 22 lbs.	589.88	
R177300BE	308582	QL-120	120 Watt UV Module	2" Slip	2" Slip	45 1/4"	6"	22"	75 1/4"	1	os 34 lbs.	897.23	
R177304AE	308698	QL-160	160 Watt UV Module	2" Slip	2" Slip	45 1/4"	11 3/4"	18"	75 1/4"	1	os 39 lbs.	1154.69	
R177305AE	308704	QL-240	240 Watt UV Module	2" Slip	2" Slip	45 1/4"	11 3/4"	24"	75 1/4"	1	os 54 lbs.	1701.64	
NOTES: FPT = Female Pipe Thread. Slip = PVC Solvent Socket type Fittings													
UV RAINLIGHT BALLAST ENCLOSURE													
R270632	309145	Raintight Ballast Enclosure Only									8	12 lbs.	44.58

ULTRAVIOLET MODULES QL-15, 25, 40, 80, 120, 160, 240 PARTS

Item No.	Part No.	UPC 788379+	Model - Description	Std. Carton	Shpg. Wgt.	List Price
1	R175060	301422	QL-15 - Quartz sleeve	30	6 lbs.	29.17
1A	R175233	302153	QL-25 - Quartz sleeve	30	9 lbs.	39.66
1B	R175234	302160	QL-40 to QL-240 - Quartz sleeve	30	13 lbs.	75.41
2	R175229DP	308339	QL-15 - Quartz bulb	12	3 lbs.	53.04
2A	R175230DP	308346	QL-25 - Quartz bulb	12	4 lbs.	61.47
2B	R175231DP	308353	QL-40 to QL-240 - Quartz bulb	12	6 lbs.	77.89
3	R175267	302368	QL-15/25/40 to QL-240 - 15/25/40Watt ballast	20	37 lbs.	69.42
3A	R175278	307950	QL-15/25/40 to QL-240 - 15/25/40Watt 230V, ballast	20	37 lbs.	67.11
4	R175109	301651	QL-15 to QL-240 - 3" Cap w/coupling	24	11 lbs.	16.89
5	R175022X	301118	QL-15 to QL-240 - Gasket	50	1 lb.	3.49
5A	R172392C	015893	QL-15 to QL-240 - Viewport clear			.68
5B	R172393	005429	QL-15 to QL-240 - "O" ring viewport			.56
6	R175232	302146	QL-15 to QL-240 - Female 4 pin connector	50	1 lb.	2.19
7	R175235	302177	QL-15 to QL-240 - Splash boot	50	3 lbs.	1.53
8	220001	300357	QL-15 to 2QL-40 - "O" ring	50	1 lb.	2.75
9	R177333	307714	QL-15 - Protective sleeve	50	20 lbs.	8.06
9A	R177334	307721	QL-25 - Protective sleeve	50	28 lbs.	9.74
9B	R177335	307738	QL-40 - Protective sleeve	50	46 lbs.	11.37
9C	R177336	307745	QL-80 to QL-240 - Protective sleeve	50	48 lbs.	11.37
10	R177338	308711	QL-15 - 3/4" Overflow pipe	25	22 lbs.	4.44
10A	R177340	308735	QL-25 - 3/4" Overflow pipe	100	24 lbs.	4.79
10B	R177342	308759	QL-40 - 3/4" Overflow pipe for QL-40	100	30 lbs.	5.14
10c	R177344	308773	QL-80 to QL-240 - 3/4" Overflow pipe	100	32 lbs.	5.16
11	R174000	302061	QL-15 to QL-40 - 1 1/4" x 3/4" Lifeguard Reducer Bushing			4.73
11A	R174001	302078	QL-15 to QL-40 - 1 1/4" x 1" Lifeguard Reducer Bushing			4.60
11B	R174002	302085	QL-15 to QL-40 - 1 1/2" x 3/4" Lifeguard Reducer Bushing			5.50
11c	R174003	302092	QL-15 to QL-40 - 1 1/2" x 1" Lifeguard Reducer Bushing			5.25
12	R270313	303952	3/4" Close nipple	25	1 lb.	1.23
12A	R270484	304713	1" Close nipple	25	2 lbs.	1.47



PRE-ASSEMBLED MODULAR SYSTEM PACKS



Part Number	UPC 788379+	Description	Dimensions	Std. Carton	Shipping Weight	List Price
Both versions include Quiet One 4000HH Pump, AF94 Mechanical Filter, AF93 Chemical Filter, AF92 Heater Module, QL-10 10- Watt UV Sterilizer, CustomFlo Water System Kit, Union Shut Off Valves, Power Drain and Base.						
Fresh or Saltwater tanks up to 100 Gallons.						
R440450	312671	In-Line System	35"L x 9.5"W x 19.5"H (with base) 31"L x 9.5"W x 18.5"H (without base)	1	24 lbs.	526.31
R440455	312695	Compact System	23.5"L x 14.5"W x 19.5"H (with base) 23"L x 13.5"W x 18.5"H (without base)	1	25 lbs.	526.31



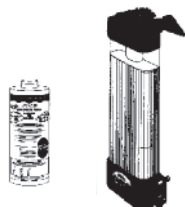
REPLACEMENT ULTRAVIOLET BULBS



Part Number	UPC 788379+	Description	Std. Carton	Shipping Weight	List Price
Full-Color Hang Up Protective Packaging					
R175229DP	308339	15 Watt QL-15 Bulb Aquastep Pro 15 Watt	12	3 lbs.	53.04
R175230DP	308346	25 Watt QL-25 Bulb Aquastep Pro 25 Watt	12	4 lbs.	61.47
R175231DP	308353	40 Watt QL-40 Watt Bulb	12	6 lbs.	77.89

Looking for a replacement UV Bulb for any make sterilizer?
We carry 100% Quartz, first-quality, replacement bulbs for any manufacturer's sterilizer.
Call or email Lifeguard Aquatics with your request and obtain special pricing.

LIFEGARD® FLUIDIZED BED FILTER

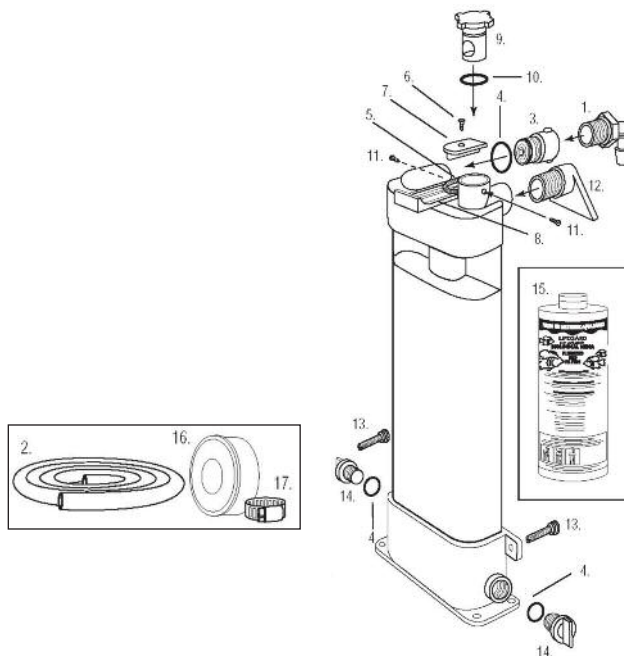


Part Number	UPC 788379+	Description	Std. Carton	Shipping Weight	List Price
R270203	308247	FB300 up to 300 Gallons	6	42 lbs.	91.20
R270241	308223	Filter Media 3 lb. Bottle	12	38 lbs.	10.66

Part No.	Model	Fresh or Saltwater System up to	Media Weight	Surface Area Sq. Ft.	Sq. Meters	Height	Width	Depth
R270203	FB 300	300 Gallons 1140 Liters	3 LBS 1.35 kg	214	19.26 m ²	17"	43.18 cm	7½" 19.05 cm 3" 7.62 cm

FLUIDIZED BED FILTER FB300 PARTS

Item No.	Part No.	UPC 788379+	Qty.	Description	List Price
1	R270248	308308	2	¾" MPT x ½" Barb Elbow	1.35
2	R270247	308407	4'	½" ID x 1¼" OD Valve Tubing	1.04 /ft.
3	R270245	308292	1	Check Valve Assembly	5.48
4	R270228	308384	3	"O" Ring, Check Valve and Plugs	.41
5	R270229	308391	1	Tension Spring	2.27
6	R01045	000035	1	#6 x ½" Screw	.24
7	R270222	021832	1	Tension Retainer	.67
8	R270242	308278	1	Mounting Bracket	4.69
9	R270220	504823	1	Flow Control Valve	4.69
10	R270227	308377	1	"O" Ring, Flow Control Valve	.41
11	R01086	021139	2	Valve Retainer Screw	.35
12	R270244	308285	1	Water Fall Assembly	4.69
13	R36021	008864	2	Adjustment Screw	.64
14	R270218	504816	2	Plug	1.46
15	R270241	308223	1	Media	10.66
16	R175163	501150	1	Thread Seal Tape	1.89
17	R175013	300982	3	Hose Clamp	1.97



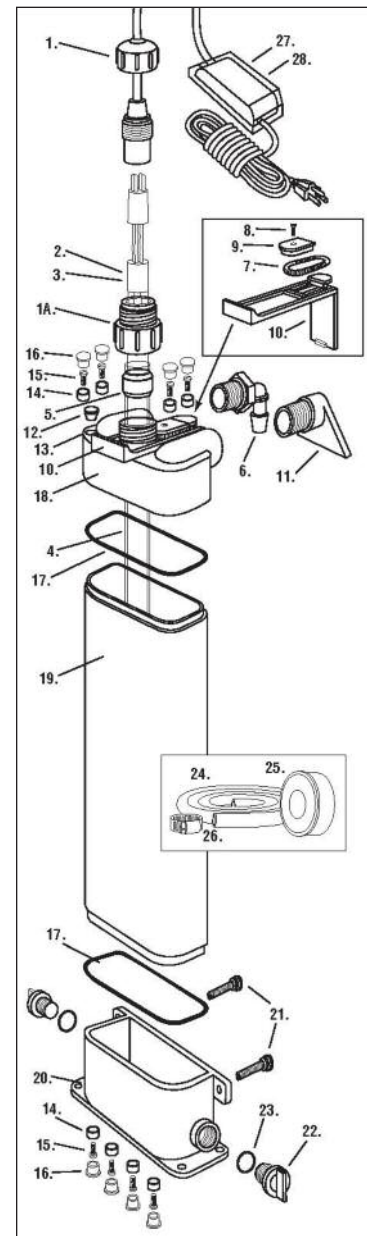
AQUASTEP® PRO ULTRAVIOLET STERILIZER MODULES



Part Number	UPC 788379+ Model	Description	Port Size		Filter Dimensions			Std. Carton	Shpg. Weight	List Price
			Inlet Port	Outlet Port	Height	Width	Depth			
115 VOLT/60 HZ UV STERILIZERS										
R440515	311322	AquaStep Pro	15 Watt UV Sterilizer	1 1/4" Slip/3/4" FPT	1" Slip/3/4" FPT	21"	7 1/2"	3"	4	28 lbs. 188.37
R440252	311339	AquaStep Pro	25 Watt UV Sterilizer	1 1/4" Slip/3/4" FPT	1" Slip/3/4" FPT	23"	7 1/2"	3"	4	28 lbs. 251.17
230 VOLT/50 HZ UV STERILIZERS										
R440508	311469	AquaStep Pro	15 Watt UV Sterilizer	1 1/4" Slip/3/4" FPT	1" Slip/3/4" FPT	21"	7 1/2"	3"	4	28 lbs. 188.37
R440509	311476	AquaStep Pro	25 Watt UV Sterilizer	1 1/4" Slip/3/4" FPT	1" Slip/3/4" FPT	23"	7 1/2"	3"	4	28 lbs. 251.17
AQUASTEP® PRO REPLACEMENT PARTS										
R440600	313500	AquaStep Pro	15/25W Quartz Sleeve						12	4 lbs. 41.75
R175229DP	308339	AquaStep Pro	15W Replacement Bulb						12	4 lbs. 53.04
R175230DP	308346	AquaStep Pro	25W Replacement Bulb						12	5 lbs. 61.47
R440604	311407	AquaStep Pro	15/25W UV Replacement Ballast 115V						12	9 lbs. 61.61
R440606	311438	AquaStep Pro	15/25W UV Replacement Ballast 230V						12	10 lbs. 61.61
R440252R	313654	AquaStep Pro	Complete Housing (without Bulb, Ballast, Sleeve)						1	5 lbs. 50.00

AQUASTEP® PRO PARTS

Item No.	Part No.	UPC 788379+	Qty.	Description	List Price
1	R440402	313555	1	Quartz Sleeve Cap	3.00
1A	R175108	313562	1	Compression Coupling	2.33
2	R175229DP	308339	1	UV Bulb 15 Watt	53.04
3	R175230DP	308346	1	UV Bulb 25 Watt	61.47
4	R440600	313500	1	Quartz Sleeve	41.75
5	R440401	313579	1	Quartz Sleeve Gasket	1.47
6	R270248	308308	2	3/4" MPT x 1/2" Insert Elbow	1.35
7	R270229	308391	1	Tension Spring	2.27
8	R01045	000035	1	#6 x 1/2" Screw	.24
9	R270222	021832	1	Tension Retainer	.67
10	R270242	308278	1	Mounting Bracket	4.69
11	R270244	308285	1	Water Fall Assembly	4.69
12	R172392c	015893	1	Clear View Port	.68
13	R172393	005429	1	"O" Ring, Clear View Port	.56
14	R440516	313586	8	Screw "O" Ring	.60
15	R440517	313593	8	S.S. Screws	1.00
16	R440518	313609	8	Screw Cap	.60
17	R440520	313616	2	D Shaped Sealing "O" Ring	5.00
18	R440521	313623	1	Replacement Housing Top	20.00
19	R440522	313630	1	Replacement Housing Body	45.00
20	R440523	313647	1	Replacement Housing Bottom	20.00
20A	R440252R	313654	1	Complete Housing (without bulb, ballast, sleeve)	50.00
21	R36021	008864	2	Adjustment Screw	.64
22	R270218	504816	2	Plug	1.46
23	R270228	308384	2	"O" Ring for Plug	.41
24	R270247	308407	4 ft	1/2" ID x 1 1/16" OD Valve Tubing	1.04
25	R175163	501150	1	Thread Seal Tape	1.89
26	R175013	300982	3	Hose Clamp	1.97
27	R440604	311483	1	Ballast Assembly 15/25 Watt 115V	61.61
28	R440606	311490	1	Ballast Assembly 15/25 Watt 230V	61.61



WOW™ MULTI-FUNCTION AQUARIUM FILTER/PUMP

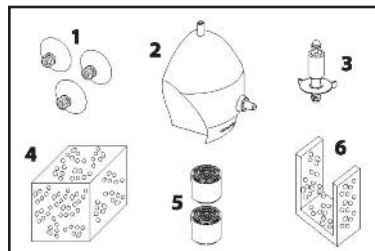


Compact Internal Filter/Pump. One Power Plug supplies a submersible air pump, a mechanical filter, a biological filter, a flow regulator, a wave maker and an air stone. 20 Gallons up to 60 Gallons.

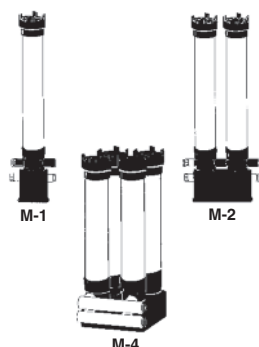
Part Number	UPC 788379+	Description		Std. Carton	Shipping Weight	List Price
R440700	313340	WOW Model 80	88 GPH	8	13 lbs.	63.00
R440701	313357	WOW Model 80 w/LED		8	14 lbs.	74.00
R440702	313364	WOW Model 160	156 GPH	8	13 lbs.	70.00
R440703	313371	WOW Model 160 w/LED		8	14 lbs.	81.00
R440704	313388	WOW Model 235	221 GPH	8	14 lbs.	80.00
R440705	313395	WOW Model 235 w/LED		8	15 lbs.	90.00

WOW™ MULTI-FUNCTION AQUARIUM FILTER/PUMP PARTS

Item	Part No.	UPC 788379+	DESCRIPTION	List Price
1	R440706	313401	Suction Cups (3)	8.36
2	R440707	313418	Air Pump	28.09
3	R440708	313425	Impeller Model 80	12.38
3	R440709	313432	Impeller Model 160	16.51
3	R440710	313449	Impeller Model 235	20.64
4	R440711	313456	Round Sponge	4.67
5	R440713	313470	Cartridge with Media	5.78
6	R440712	313463	Flex Sponge	4.56



M-SERIES COMMERCIAL CARTRIDGE FILTERS

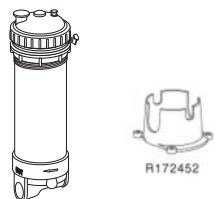


Part Number	UPC 788379+	Model Number	Cartridge Length	Sq. Ft. Filter Area	GPM	Plumbing Size	Filter Dimensions Height	Filter Dimensions Width	Filter Dimensions Depth	Std. Carton	Shipping Weight	List Price
R176131	302498	M-1	29 1/4"	12.5	12.5	2" Slip	39 1/2"	5 1/2"	9 1/4"	1 os	8 lbs.	131.08
R176132	302504	M-2	29 1/4"	25	25	2" Slip	39 1/2"	6"	15 1/4"	1 os	14 lbs.	209.00
R176133	302511	M-3	29 1/4"	37.5	37.5	2" Slip	39 1/2"	6"	22"	1 os	24 lbs.	342.98
R176134	302528	M-4	29 1/4"	50	50	2" Slip	39 1/2"	11 3/4"	18"	1 os	28 lbs.	444.44
R176136	302535	M-6	29 1/4"	75	75	2" Slip	39 1/2"	11 3/4"	24"	1 os	38 lbs.	604.45

Vertical Maintenance Clearance = Filter Height Plus Cartridge Length. Filter with Gauge = Add 4" to Filter Height.
 Horizontal Maintenance Clearance = Filter Depth Plus Cartridge Length. FPT = means Female Pipe Thread.
 All Commercial filters include a 20 micron cartridge in each housing. Carbon chambers can be purchased separately to convert units to chemical filters.

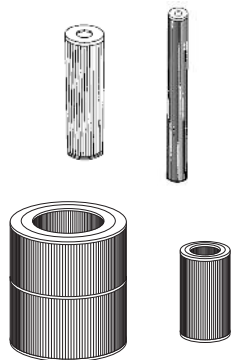
All Mechanical Commercial Filters can be converted into Chemical Commercial Filters. Please see Page 4 for details

RTL DYNAMIC® SERIES COMMERCIAL CARTRIDGE FILTERS



Order Number	UPC 788379+	Model Number	DESCRIPTION	Sq. Ft. Filter Area	Maximum GPM	Plumbing Size	Filter Dimensions Height	Filter Dimensions Diameter	Std. Carton	Shipping Weight	List Price
R172502J	503543	RTL 25	Slip, 3 oz. Cartridge	25	100	2" socket	18"	8 1/4"	4	27 lbs.	198.17
R172503	501556	RTL 75	Slip, 3 oz. Cartridge	75	100	2" socket	25"	8 1/4"	4	30 lbs.	260.47
R172505	501602	RTL 100	Slip, 3 oz. Cartridge	100	100	2" socket	31 1/2"	8 1/4"	4	32 lbs.	288.06
R172452	501105	RTL Base							24	13 lbs.	8.63

CARTRIDGES



Part Number	UPC 788379+	Model Number	Cartridge Length	Sq. Ft. Filter Area	GPM		Standard Carton	Shipping Weight	List Price
R172006A	308810	(CL-9)	9 3/4"	4	4	20 micron	56	18 lbs.	12.62
R172021	500286	(CL-19)	19 1/2"	8	8	20 micron	42	20 lbs.	14.30
R172010	500191	(CL-29)	29 1/4"	12.5	12.5	20 micron	42	28 lbs.	18.47
R172004	308860	Magnum Replacement Cartridge Fits #200, 220, 330, 350 & H.O.T. 250					24	6 lbs.	12.50
R172011	500740	Replaces Modufilter/Ocean Clear 18 Screen Cartridge					6	19 lbs.	93.80
R172025	500771	Replaces Modufilter/Ocean Clear 25 Screen Cartridge					6	17 lbs.	56.76
R172040	500825	Replaces Modufilter/Ocean Clear 40 Screen Cartridge					24	25 lbs.	72.92
R173429	018931	RTL 25 Sq. Ft. Replacement Cartridge					6	8 lbs.	34.47
R173435	018993	RTL 75 Sq. Ft. Replacement Cartridge					6	15 lbs.	72.14
R173436	019006	RTL 100 Sq. Ft. Replacement Cartridge					6	38 lbs.	104.61

New 100 micron screen cartridges now available for all the AF-Series, Dynamic and commercial M-Series Mechanical Filters. Replace the existing cartridge with the 100 micron screen cartridge to create a prefilter for aquarium systems or an excellent pond filter

R172026	501020	Lifegard 9 3/4" 100 Micron Screen Cartridge					24	9 lbs.	17.82
R172027	501044	Lifegard 19 1/2" 100 Micron Screen Cartridge					12	9 lbs.	22.29
R172028	501051	Lifegard 29 1/4" 100 Micron Screen Cartridge					20	21 lbs.	32.80
R172516	308902	RTL 25 100 Micron Screen Cartridge					6	11 lbs.	51.89
R172517	308919	RTL 75 100 Micron Screen Cartridge					6	14 lbs.	70.29
R172518	308926	RTL 100 100 Micron Screen Cartridge					6	18 lbs.	95.72

LIFEGARD® SAND FILTERS, VALVES, SYSTEMS



Part No.	UPC 788379+	Description	GPM	Height	Diam.	Std Ctn.	Ship Wt.	List Price
SAND FILTERS								
R175306	022945	Tarpon W/multiport valve	40	37"	19"	1	30 lbs.	767.75
R175307	022952	Tarpon W/multiport valve	50	38½"	21"	1	35 lbs.	789.68
R175293	307332	Tarpon W/multiport valve	60	41¼"	24"	1	38 lbs.	807.42
R175308	022969	Marlin	100	39¾"	30"	1	39 lbs.	1326.55
R175309	022976	Marlin	140	45¼"	36"	1	72 lbs.	1590.25
R152901c	791315	Base and Hose Kit				1	6.2 lbs.	137.09
MULTIPORT VALVES								
261173	022990	1½" Threaded				1	10 lbs.	158.76
261055	308858	2" Threaded				1	10 lbs.	238.15



INTELLI-FEED™ AQUARIUM FISH FEEDER

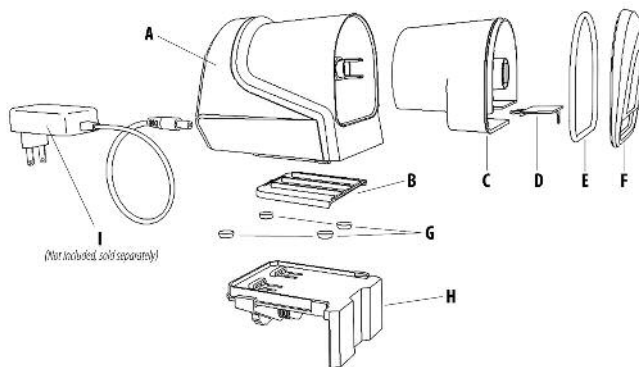
Part Number	UPC 788379+	Model	Std. Carton	Shipping Weight	List Price
R440950	314088	IntelliFeed Aquarium Fish Feeder	12	9 lbs.	77.78

Designed to keep moisture out of food container . . . for trouble free operation. Sealed container moves forward . . . rotates and drops desired amount of food . . . returns back into housing . . . keeps moisture out and food dry. Automatic and digitally controlled. Preprogrammed for 2 feedings per day with up to 12 feedings daily depending on number of fish in aquarium. Manually push SET button to feed anytime. Operates on 4 AA batteries, (not included), or optional 6V power adapter. Includes tank mounting bracket and rubber feet.



INTELLI-FEED™ AQUARIUM FISH FEEDER REPLACEMENT PARTS

Item	Part No.	UPC 788379+	DESCRIPTION	List Price
A	(Not a replacement part)		Feeder motor housing	
B	R440952	314101	Battery compartment cover	4.00
C	R440953	314118	Food container	15.00
D	R440954	314125	Slider for food dispersing	4.00
E	R440955	314132	"O" Ring, feeder cover	5.00
F	R440956	314149	Feeder cover	6.00
G	R440957	314156	Adhesive feet (4)	4.00
H	R440958	314163	Aquarium mounting bracket	18.00
I	R440951	314095	Optional 6V power adapter	18.00



AUTOMATIC FISH FEEDER



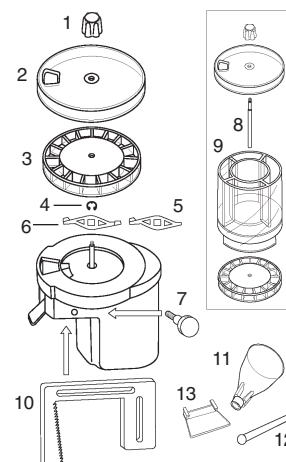
Perfect for vacations and freedom from daily maintenance. Will feed one to four times daily. UL Listed 115 Volt, 2.7 Watt. Hopper can be set to feed daily for up to four months.

R440400	507503	Lifeguard Automatic Fish Feeder with Hopper	6	10 lbs.	77.78
---------	--------	---	---	---------	-------

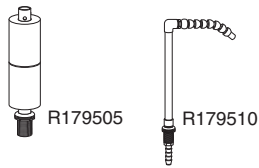
FISH FEEDER PARTS

Order No.: R440400 Description: FISH FEEDER & HOPPER

Item	Part No.	UPC 788379+	DESCRIPTION	List Price	Item	Part No.	UPC 788379+	DESCRIPTION	List Price
1	R270113	308056	Knob with insert	2.08	8	R270137	308155	Hopper Extension Shaft	12.77
2	R270115	308070	Feed Dial Cover	2.67	9	R270138	308162	Hopper	10.37
3	R270116	308087	Feed Dial	2.67	10	R270141	308049	Holding Clamps	2.63
4	R270117	308094	Retaining "E" Clip	.35	11	R270142	308179	Fish Food Funnel	1.58
5	R270118	308100	Single Feed Arm	.79	12	R270143	308186	Fish Food Stick	1.05
6	R270119	308117	Double Feed Arm	.79	13	R270144	308193	Fish Food Slide	1.58
7	R270122	308148	Nylon Mounting Screw	.45					



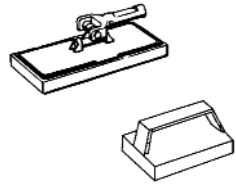
DRAIN AND RETURN KITS



Part Number	UPC 788379+	Description	Std. Carton	Shpg. Wgt.	List Price
R179505	300098	Overflow Drain Kit, Bag with Header	12	30 lbs.	32.09
R179510	300104	Overflow Return Kit, Bag with Header	12	30 lbs.	35.60

For use in all types of aquariums with an overflow box

SCRUBBERS



R111560	000905	SCRUBBER. Swivel joint handle allows it to work with ease to reach hard to get at spots. Snap-adapt handle fits 4' or 6' PVC handle. Replaceable light duty pad 4 ⁵ / ₈ " x 10". Excellent for use on large aquariums, lobster tanks, or holding tanks.	12	6 lbs.	21.43
R111561	000912	REPLACEMENT PAD for R111560.	12	2 lbs.	3.44
R111581	009830	FIXED SCRUBBER. Fine grade pad on molded handle. A new low cost scrubber with permanent white fine grade pad on a molded handle. Perfect to clean all size aquariums.	24	7 lbs.	4.19

PELLETIZED ACTIVATED CARBON PROFESSIONAL GRADE



R280842	306847	ACTIVATED CARBON ½ Gallon (28 oz.).	12	25 lbs.	15.37
R280840	306823	ACTIVATED CARBON BULK — 55 lb. Bag Only, at \$6.04 per pound	1	55 lbs.	332.20

BIO-MATE® BIOLOGICAL FILTER MEDIA



Part Number	UPC 788379+	Description	# of Pieces	Std. Carton	Shipping Weight	List Price
R440300	506506	Solids 1" Gallon Display	225	12	18 lbs.	16.23
R440301	506513	Solids 1½" Gallon Display	75	12	16 lbs.	16.23
R440304	506544	Carbon 1½" Gallon Display	75	16	43 lbs.	26.93
R440308	506582	Foam 1½" Gallon Display	75	16	17 lbs.	36.67
R440312	506629	Ceramic 1½" Gallon Display	75	16	59 lbs.	38.47
R440302	506520	Solids 1" Bulk	9000	1	47 lbs.	317.29
R440303	506537	Solids 1½" Bulk	3000	1	45 lbs.	296.14

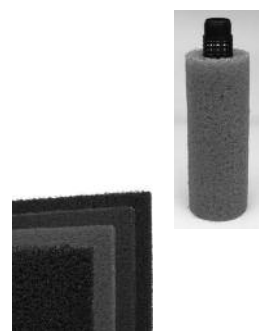
BONDED FILTER PAD MATERIAL



Easily cut to fit any size filter. Bonded, keeps original shape. Duplicates or surpasses original equipment specifications. Uniform, consistent longer lasting material.

R270835	307240	Prefilter, 24" x 15" Pad Size (360 sq. in.) Bagged.	12	4 lbs.	6.03
R270840	307257	15' x 2' Bulk.	1	3 lbs.	45.56
R170127	309367	90' x 2' Bulk.	1	14 lbs.	182.33
R440480	312718	30" x 36" Felt Pad.	10	8 lbs.	14.75
R440485	312732	Prefilter and Felt Pad Combo, 12" x 12" Felt and 12" x 12" Blue Pads.	24	5 lbs.	7.81
R170146B	313494	5' x 5' Felt, Bulk.	1	2 lbs.	29.55
R170146A	300142	50' x 5' Felt, Bulk.	1	20 lbs.	194.23
R170150	313517	30" x 15" Super Felt Display Pack	10	3.5 lbs.	16.48
R170152	313524	5' x 5' Super Felt, Bulk.	1	2 lbs.	32.97
R170154	313531	50' x 5' Super Felt, Bulk.	1	20 lbs.	215.38

AQUAMESH® PROGRESSIVE FILTER MEDIA



Different mesh densities can be used in sequence or separately. Unique, flexible media made of environmentally non-toxic EVA. Easily cut to fit any size filter, resists clogging.

R440350	311155	12" x 5", Prefilter w/1½" MPT/FPT	6	5 lbs.	25.44
R440351	311162	16" x 5", Prefilter w/1½" MPT/FPT	6	6 lbs.	30.71
R440352	311179	22" x 5", Prefilter w/1½" MPT/FPT	6	8 lbs.	41.72
R440353	311216	39" x 24", Grey, Stage #4	4	16 lbs.	50.98
R440354	311223	39" x 24", Blue, Stage #3	4	16 lbs.	59.88
R440355	311230	39" x 24", Green, Stage #2	4	16 lbs.	58.41
R440356	311247	39" x 24", Black, Stage #1	4	16 lbs.	46.58
R440357	311254	19 ½" x 24", Grey, Stage #4	8	20 lbs.	28.21
R440358	311261	19 ½" x 24", Blue, Stage #3	8	20 lbs.	29.95
R440359	311278	19 ½" x 24", Green, Stage #2	8	20 lbs.	29.21
R440360	311285	19 ½" x 24", Black, Stage #1	8	20 lbs.	26.95

SCRATCH REMOVAL KIT



Part Number	UPC 788379+	Description	Std. Carton	Shpg. Wgt.	List Price
R272000	501082	SCRATCH REMOVAL KIT. Removes scratches from acrylic aquariums and many forms of plastic and wood surfaces. Molded case contains instructions, 8 sheets of progressively graded "crystal pad", cotton flannel, sanding block and ¾ oz. "Final Polish."	12	6 lbs.	43.42

LIFEGARD® ALGAE PADS



Part Number	UPC	Description	Std. Carton	Shpg. Wgt.	List Price
Remove unsightly algae from inside your tank. Attractive display package.					
R270910	307790	3" x 3" BLUE ALGAE PAD — Glass aquariums.	24	2 lbs.	2.79
R270911	307813	3" x 3" WHITE ALGAE PAD — Acrylic aquariums.	24	2 lbs.	2.79
R270912	307806	4" x 6" BLUE ALGAE PAD — Glass aquariums.	24	3 lbs.	4.06
R270913	307820	4" x 6" WHITE ALGAE PAD — Acrylic aquariums.	24	3 lbs.	4.06

LIFEGARD® TEST STRIPS



Each vial features a water proof hinged pop-top lid and a desiccant liner to protect strips from moisture intrusion. Packaged in bright, attractive, color-coded hang or stand boxes, 24 to a master case.

R440001	502133	6 WAY ALL PURPOSE TEST KIT , for salt of fresh water aquariums or ponds 25 tests each of ALKALINITY, pH, NITRITE, NITRATE, HARDNESS and AMMONIA	24	7 lbs.	30.59
R440002	502140	5 WAY TEST STRIP , For salt or fresh water aquariums or ponds. 25 tests each of ALKALINITY, pH, NITRITE, NITRATE and HARDNESS.	24	4 lbs.	16.38
R440003	502157	AMMONIA TEST STRIP , For salt or freshwater aquariums or ponds. 25 tests of AMMONIA using new Pat.Pend. technology. No need for a separate vial. Just dip and read. 0 to 6.0.	24	3 lbs.	17.09



LIFEGARD® LED DIGITAL THERMOMETER

Highly Visible Ultra Bright Blue LED Display for submersible applications to display water temperature or dry applications to display air temperature. Safe 6V Power Supply with 5' cord and suction cup attachment.

R270780	314378	LED DIGITAL THERMOMETER	100	26 lbs.	24.07
---------	--------	--------------------------------	-----	---------	-------

LIFEGARD® DIGITAL THERMOMETERS

Use for aquariums, reptiles, greenhouses. Safe for salt or fresh water use.

Each includes a long life battery, plastic probe with suction cup and cord.



R270778	307103	LITTLE TIME or TEMP™ . Digital clock/thermometer with illuminating light. Accurate measurement of aquarium water or room temperature in °F or °C.	100	19 lbs.	24.07
R270779	307110	DIGITAL TEMP ALERT™ . Large face digital thermometer with alert feature. Displays both aquarium water temperature and room temperature in °F. Has 4 alert features. Alarm will sound and LED flashes: (1) High temp alert only (probe); (2) Low temp alert only (probe); (3) Both high and low temp alert (air/room); (4) Both high and low temp alert (probe).	50	26 lbs.	42.52
R270779c	307905	BIG DIGITAL CELSIUS TEMP ALERT™ . Temperature displays in °C with all the above features.	50	26 lbs.	42.52



UNDERWATER RIVER™ WITH AIR PUMP

Bubbles travel to create a river-like effect underwater.

Kit includes decorative ornament and all necessary parts. (Air pump included).

R440370	311704	Underwater River - Small - up to 20 gallon tank	30	35 lbs.	15.78
R440371	311728	Underwater River - Medium - up to 40 gallon tank	30	35 lbs.	23.72

WET OR DRY AIR PUMPS + LED LIGHT

Can use submersible or outside aquarium or pond (Wet or Dry). Pond models also used to prevent ice forming and include 20' cord. No air stone needed when used in submersible applications. Features LED light to illuminate bubbles inside aquarium. Includes 4 color lenses and air hose. Easy to place under the gravel to conceal. Quiet operation.



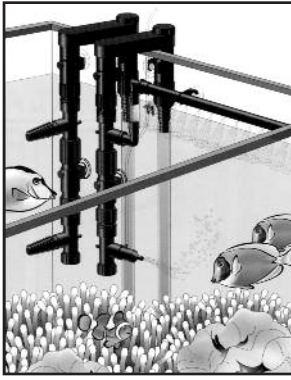
R440473	312985	Wet/Dry Air Pump 100 (up to 30 gallon aquarium, maximum depth = 30", air flow = 15 gph)	16	14 lbs.	28.96
R440451	312992	Wet/Dry Air Pump 100 with LED light (up to 30 gallon aquarium, maximum depth = 30", air flow = 15 gph)	16	16 lbs.	34.43
R440452	313005	Wet/Dry Air Pump 200 (up to 60 gallon aquarium, maximum depth = 40", air flow = 30 gph)	16	15 lbs.	33.20
R440453	313012	Wet/Dry Air Pump 200 with LED light (up to 60 gallon aquarium, maximum depth = 40", air flow = 30 gph)	16	17 lbs.	39.35
R440454	313029	Wet/Dry Air Pump 300 with 20' cord (up to 90 gallon pond, maximum depth = 40", air flow = 80 gph)	8	27 lbs.	83.66

MINI LED LIGHT

For use submersible or outside aquarium (Wet or Dry). Includes suction cup to attach in desired location and 4 color lenses. Low energy consumption (0.5 watts)

R440474	313036	Mini Wet/Dry LED Light	36	13 lbs.	21.72
---------	--------	------------------------	----	---------	-------

LIFEGARD® CUSTOMFLO® WATER SYSTEM



R440031	501280	CUSTOMFLO WATER SYSTEM COMPLETE KIT	6	22 lbs.	62.29
R440035	501358	CUSTOMFLO WATER SYSTEM STARTER KIT	10	19 lbs.	31.58



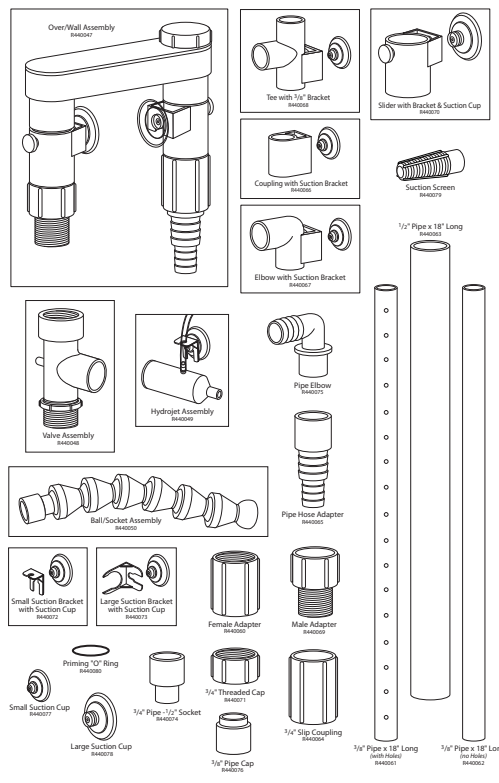
Assemble parts in multiple ways to create desired flow patterns
For use on large or small aquariums or to upgrade existing system

- ◆ No Holes to Drill.
- ◆ Includes Control Valves, Spray Bars, Suction Cups, Adapters, Hydro Jet, Ball/Socket Assembly and all necessary Fittings.

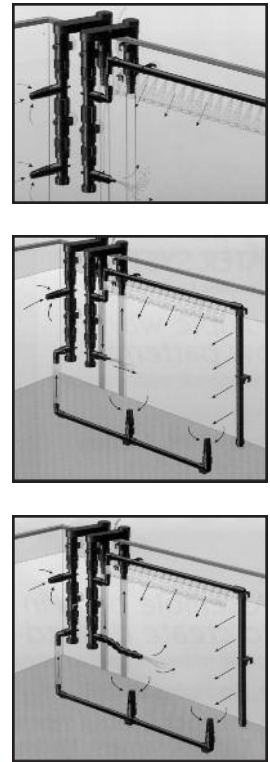
LIFEGARD CUSTOMFLO® WATER SYSTEM COMPLETE KIT PARTS

PART	UPC 788379+	DESCRIPTION	STD. CARTON	LIST PRICE
R440047	501303	Over/Wall Assembly (1 per card)	24	17.95
R440048	501310	Valve Assembly (1 per card)	24	9.73
R440049	501327	Hydro Jet (1 per card)	24	6.73
R440050	501341	Ball/Socket Assembly (1 per card)	24	8.96
R440060	501358	Female Adapter	24	3.75
R440061	501365	Small Pipe w/Holes	24	8.96
R440062	501372	Small Pipe No Holes	24	8.22
R440063	501389	Large Pipe	24	8.96
R440064	501396	Coupling	24	2.39
R440065	501433	Pipe/Hose Adapter	24	4.03
R440066	501464	Coupling Bracket w/Suction Cup	24	5.68
R440067	501471	Elbow Bracket w/Suction Cup	24	5.68
R440068	501495	Tee Bracket w/Suction Cup	24	5.68
R440069	501518	Male Adapter	24	3.75
R440070	501549	Slider w/Bracket and Suction Cup	24	5.23
R440071	501570	Cap	24	3.75
R440072	501594	Airline Bracket w/Suction Cup	24	4.80
R440073	501617	Pipe Bracket w/Suction Cup	24	4.80
R440074	501631	Screen Adapter	24	3.00
R440075	501648	Pipe Elbow	24	4.34
R440076	501655	Pipe Cap w/Suction Cup	24	4.34
R440077	501686	Small Suction Cup	24	2.69
R440078	501730	Large Suction Cup	24	2.69
R440079	501754	Suction Screen	24	3.00
R440080	501761	"O" Ring	24	2.09

Unless noted, parts are 2 per card

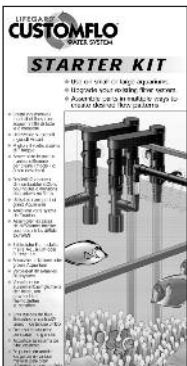


CUSTOMFLO® SAMPLE SYSTEM DESIGNS:



LIFEGARD® CUSTOMFLO® WATER SYSTEM STARTER KIT PARTS

This introductory kit will enable you to assemble parts in multiple ways to create desired flow patterns. For use on large or small aquariums or to upgrade existing systems. 10 per master



Part No.	UPC 788379+	DESCRIPTION	STD. CARTON	LIST PRICE
R440047	501303	Over the Wall Assembly	24	17.95
R440048	501310	Valve Assembly	24	9.73
R440079	501754	Suction Screen	24	3.00
R440066	501464	Coupling Bracket with suction cup	24	5.68
R440067	501471	Elbow Bracket with suction cup	24	5.68
R440050	501341	Ball Socket Assembly	24	8.96
R440075	501648	Pipe Elbow	24	4.34
R270247	308407	1/2" OD x 1 1/16" ID x 6" Tubing		1.04/ft.
R440071	501570	Cap	24	3.75
R440076	501655	Pipe Cap	24	4.34
R440061	501365	3/8" x 9" Small Pipe with holes	24	8.96

LIFEGARD® QUIET ONE® ORIGINAL SERIES PUMPS 115V/60Hz



Part Number	UPC 788379+	Model	GPH	Max H. Ft.	Watt	Amp	Cord	Std. Carton	Shipping Weight	List Price
Aquarium Pumps Original Series										
R440902	314217	2200	581	10.0	36.0	0.54	6'	8	21 lbs.	81.29
R440903	314224	3000	713	10.17	36.0	0.55	6'	8	21 lbs.	85.05
R440904	314231	4000	951	9.68	42.0	0.69	6'	8	21 lbs.	100.95
R440905	314248	5000	1330	10.35	116.0	2.60	6'	8	37 lbs.	176.12
R440906	314255	6000	1653	11.5	145.0	3.20	6'	8	37 lbs.	187.83

Pond Pumps Original Series

R440922	314279	2200	581	10.0	36.0	0.54	20'	9	35 lbs.	110.46
R440923	314286	3000	713	10.17	36.0	0.55	20'	9	35 lbs.	115.11
R440924	314293	4000	951	9.68	42.0	0.69	20'	9	35 lbs.	118.59
R440925	314309	5000	1330	10.35	116.0	2.60	20'	6	37 lbs.	207.35
R440926	314316	6000	1653	11.5	145.0	3.20	20'	6	37 lbs.	215.11

LIFEGARD® QUIET ONE® ORIGINAL SERIES PUMPS - REPLACEMENT PARTS



Part Number	UPC 788379+	Description	For Pump Model	Std. Carton	List Price
Impellers					
R440113	310219	Impeller (D)	Quiet 1 - 2200/3000/4000	1	19.39
R440115	310233	Impeller (D)	Quiet 1 - 4000HH/6000	1	45.47
R440116	310240	Impeller (D)	Quiet 1 - 5000	1	45.47



Ceramic Shafts

R440121	310387	Ceramic Shaft (L) Stabilizer Top (N), Stabilizer Bottom (M)	Quiet 1 - 2200/3000/4000	1	31.07
R440122	310394	Ceramic Shaft (L) Stabilizer Top (N), Stabilizer Bottom (M)	Quiet 1 - 4000HH/5000/6000	1	32.67



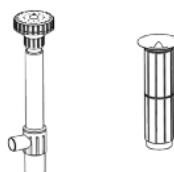
"O" Rings

R440133	310424	"O" Ring (F)	Quiet 1 - 2200/3000/4000	2	5.27
R440134	310431	"O" Ring (F)	Quiet 1 - 5000/6000	2	5.27



Volutes (Front Housings)

R440143	310462	Front Housing Dry (B)	Quiet 1 - 2200/3000/4000	1	11.10
R440144	310479	Front Housing (B), Housing Screw (H)	Quiet 1 - 5000/6000	1	23.77
R440145	504434	Front Housing Wet	Quiet 1 - 2200/3000/4000	1	20.26



Fountain Kits

R440323	310660	Spray Nozzle, Bell Nozzle, Pump Adapter for Nozzles, Nozzle Extension Adapter	Quiet 1 - 2200/3000/4000/5000/6000 Pond	1	36.47
---------	--------	--	---	---	-------



Sponges and Grills

R440193	310585	Gray Sponge	Quiet 1 - 2200/3000/4000/5000/6000	1	17.03
R440195	505455	Grill/Strainer	Quiet 1 - 2200/3000/4000/5000/6000	1	10.13



Vinyl Tube Adapters, Hose, Baskets

R440325	310752	Pump Adapter, 1" FPT x 3/4" Fitting	Quiet 1 - 2200/3000/4000/5000/6000	1	3.34
---------	--------	-------------------------------------	------------------------------------	---	------

LIFEGARD® QUIET ONE® PRO SERIES PUMPS 115V/60Hz



- ECO-SAV™ runs cooler and generates more power with less energy consumption.
- Internal recirculation prevents overheating and ejects obstructing debris.
- Remarkable impeller technology provides combined rotors, improved shaft materials and corrosion resistant bearings.
- EZ access cover allows ease of maintenance of rotor, shaft and removable impellers.
- Innovative “cooling chambers” provide air-cooling during dry use and water cooling in wet applications.
- Flow controls on 200, 400, 800, 1200, 2200, 3000, 4000, 5000 and 6000 models.

Part Number	UPC 788379+	Model	GPH	Max H. Ft.	Watt	Amp	Cord	Std. Carton	Shipping Weight	List Price
Aquarium Pumps PRO Series										
R440464	313128	200	53	1.64	5.5	0.09	6'	36	33 lbs.	29.78
R440465	313135	400	106	2.13	7	0.09	6'	36	33 lbs.	32.63
R440101	300005	800	220	4.4	13.5	0.24	6'	24	41 lbs.	36.45
R440102	300012	1200	296	6.1	25.5	0.4	6'	24	51 lbs.	50.18
R440110	310981	2200	594	10.66	45	0.46	6'	8	38 lbs.	127.19
R440103	300029	3000	819	10.33	55	0.54	6'	8	38 lbs.	134.63
R440104	300074	4000	991	10.17	65	0.6	6'	8	41 lbs.	142.26
R440106	300227	5000	1400	11.65	115	1	6'	8	42 lbs.	233.01
R440107	300234	6000	1664	11.65	135	1.18	6'	8	42 lbs.	244.48
R440108**	310967	9000	2040	16.4	125	3.1	20'	4	45 lbs.	310.75
R440109**	310974	14000	3307	25	175	2.5	20'	4	51 lbs.	541.09

Pond Pumps PRO Series

R440151	300265	800	220	4.4	13.5	0.24	20'	12	26 lbs.	56.73
R440152	300272	1200	296	6.1	25.5	0.4	20'	12	38 lbs.	73.54
R440160	310943	2200	594	10.66	45	0.46	20'	8	35 lbs.	154.75
R440153	300289	3000	819	10.33	55	0.54	20'	8	35 lbs.	160.57
R440154	300296	4000	991	10.17	65	0.6	20'	8	35 lbs.	165.82
R440155	300302	5000	1400	11.65	115	1	20'	8	40 lbs.	262.95
R440156	300319	6000	1664	11.65	135	1.18	20'	8	40 lbs.	270.22
R440157	310912	9000	2040	16.4	125	3.1	20'	4	35 lbs.	473.45
R440158	310929	14000	3307	25	175	2.5	20'	4	37 lbs.	868.36
R440159	310936	16000	3915	14.8	185	2.7	20'	4	37 lbs.	653.45

Fountain Pumps PRO Series

R440801	313739	200	53	1.64	5.5	0.09	6'	36	38 lbs.	36.61
R440802	313746	400	106	2.13	7	0.09	6'	36	38 lbs.	39.94
R440803	313753	800	220	4.4	13.5	0.24	20'	8	16 lbs.	48.83
R440804	313760	1200	296	6.1	25.5	0.4	20'	8	19 lbs.	65.50
R440805	313777	2200	594	10.66	45	0.46	20'	8	31 lbs.	134.95
R440806	313784	3000	819	10.33	55	0.54	20'	8	31 lbs.	140.36
R440807	313791	4000	991	10.17	65	0.6	20'	8	31 lbs.	148.12
R440808	313807	5000	1400	11.65	115	1	20'	8	50 lbs.	236.12
R440809	313814	6000	1664	11.65	135	1.18	20'	8	50 lbs.	247.83
R440108**	310967	9000	2040	16.4	125	3.1	20'	4	45 lbs.	310.75
R440109**	310974	14000	3307	25	175	2.5	20'	4	51 lbs.	541.09

Protein Skimmer Pumps PRO Series

R440810	314026	Quiet One Protein Skimmer Pump with Needle Wheel Impeller 150 GPH Air Flow					6'	8	21 lbs.	172.93
R440811	314033	Quiet One Protein Skimmer Pump with Needle Wheel Impeller 250 GPH Air Flow					6'	8	21 lbs.	193.13

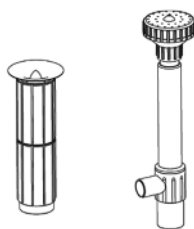
Flow rate is reduced by 25% to account for loss in filter and plumbing
 Recommended turnover rate in Aquarium fresh water systems is 2 times per hour and Aquarium salt water systems 3 times per hour
 Recommended turnover rate in Ponds is once every 2 hours.
 Flow rates calculated with flooded suction and no output restriction.

** Combination Aquarium/Fountain Pump Package

All Quiet One Pumps can be special ordered with 230V 50Hz motors and European plugs.
 Please call for pricing, availability and minimum order requirements.

LIFEGARD® QUIET ONE® PRO SERIES PUMPS - REPLACEMENT PARTS

Part Number	UPC 788379+	Description	For Pump Model	Std. Carton	List Price
Impellers					
R440111	310196	Impeller (D)	Quiet 1 - 800	1	10.54
R440112	310202	Impeller (D)	Quiet 1 - 1200	1	12.34
R440118	312039	Impeller (D)	Quiet 1 - 9000 115V	1	59.39
R440119	312046	Impeller (D)	Quiet 1 - 14000 115V230V	1	63.72
R440120	312053	Impeller (D)	Quiet 1 - 16000 115V230V	1	63.72
R440820	313838	Impeller/Shaft Combination	Quiet 1 - 2200/3000/4000 120V 60HZ Aquarium, Fountain, Pond pumps	1	44.93
R440821	313845	Impeller	Quiet 1 - 5000/6000 120V 60HZ Aquarium, Fountain pumps	1	72.34
R440822	313852	Impeller/Shaft Combination	Quiet 1 - 5000/6000 120V 60HZ Pond pumps	1	57.82
Ceramic Shafts					
R440123	312060	Ceramic Shaft (L) Stabilizer Top (N), Stabilizer Bottom (M)	Quiet 1 - 9000/14000/16000	1	46.00
R440823	313869	Bushings/Bearing	Quiet 1 - 2200/3000/4000 Aquarium, Fountain, Pond pumps	1	15.66
R440824	313876	Ceramic Shaft/Bushings	Quiet 1 - 5000/6000 Aquarium, Fountain	1	17.29
"O"Rings					
R440131	310400	"O" Ring (F)	Quiet 1 - 800	2	4.78
R440132	310417	"O" Ring (F)	Quiet 1 - 1200	2	4.78
R440135	311803	"O" Ring (F)	Quiet 1 - 9000/14000/16000	2	9.05
R440825	313883	"O" Ring (F)	Quiet 1 - 2200/3000/4000 Aquarium, Fountain, Pond pumps	1	5.58
R440826	313890	"O" Ring (F)	Quiet 1 - 5000/6000 Aquarium, Fountain, Pond pumps	1	5.58
Volutes (Front Housings)					
R440141	310448	Front Housing Barbed (A)	Quiet 1 - 800 Pond	1	6.98
R440142	310455	Front Housing Dry (B)	Quiet 1 - 1200	1	10.05
R440148	310486	Front Housing Wet (C), Housing Regulator (A)	Quiet 1 - 800	1	10.05
R440149	310493	Front Housing Wet (C), Housing Regulator (A)	Quiet 1 - 1200	1	10.05
R440147	311810	Front Housing	Quiet 1 - 9000	1	37.89
R440138	311926	Front Housing	Quiet 1 - 14000	1	37.89
R440139	311933	Front Housing	Quiet 1 - 16000	1	37.89
R440827	313906	Front Housing	Quiet 1 - 2200	1	10.81
R440828	313913	Front Housing	Quiet 1 - 3000	1	10.81
R440829	313920	Front Housing	Quiet 1 - 4000	1	10.81
R440830	313937	Front Housing	Quiet 1 - 5000	1	13.33
R440831	313944	Front Housing	Quiet 1 - 6000	1	13.33
Fountain Kits					
R440321	310646	Spray Nozzle, Bell Nozzle, Pump Adapter for Nozzles, Nozzle Extension Adapter	Quiet 1 - 800 Pond	1	22.70
R440322	310653	Spray Nozzle, Bell Nozzle, Pump Adapter for Nozzles, Nozzle Extension Adapter	Quiet 1 - 1200 Pond	1	31.60
R440834	313975	Fountain Kit,	Quiet 1 - 2200/3000/4000 Pond	1	29.33
R440835	313982	Fountain Kit,	Quiet 1 - 5000/6000 Pond	1	29.88
R440324	311834	Spray Nozzle, Bell Nozzle, Pump Adapter for Nozzles, Nozzle Extension Adapter	Quiet 1 - 9000/14000/16000 Pond	1	225.13
Sponges and Grills					
R440191	310561	Gray Sponge	Quiet 1 - 800	1	8.45
R440192	310578	Gray Sponge	Quiet 1 - 1200	1	12.16
R440193	310585	Gray Sponge	Quiet 1 - 2200/3000/4000/5000/6000	1	17.03
R440196	505462	Grill/Strainer	Quiet 1 - 800	1	9.31
R440194	310592	Grill/Strainer	Quiet 1 - 1200	1	9.31
R440195	505455	Grill/Strainer	Quiet 1 - 2200/3000/4000/5000/6000	1	10.13
R440832	313951	Prefilter with Flow Regulator	Quiet 1 - 2200/3000/4000 Aquarium, Fountain pumps	1	12.69
R440833	313968	Prefilter with Flow Regulator	Quiet 1 - 5000/6000 Aquarium, Fountain pumps	1	15.66
Vinyl Tube Adapters, Hose, Baskets					
R440330	311902	Pump Adapter, 1/2" FPT x Insert	Quiet 1 - 1200	1	2.63
R440326	311841	Hose Adapters (2/Set)	Quiet 1 - 9000/14000/16000	1	36.76
R440327	311858	Replacement Hose	Quiet 1 - 9000/14000/16000	1	42.61
R440328	311865	Prefilter Basket	Quiet 1 - 9000/14000/16000	1	35.06
R440329	314330	Pump Adapter, 3/4" or 1"	Quiet 1 - 2200/3000/4000/5000/6000	1	6.00



COMMERCIAL PUMPS**LIFEGARD® SEA HORSE® SELF PRIME PUMPS**

Part Number	UPC 788379+	Model	Suction	Discharge	Std. Carton	Shipping Weight	List Price
R175038	301293	1/2 HP Sea Horse 66 GPM, 115V, 60HZ	1 1/2" FPT	1 1/2" FPT	1	24 lbs.	437.38
R175300	022884	1/2 HP Sea Horse 50 GPM, 230V, 50HZ	1 1/2" FPT	1 1/2" FPT	1	24 lbs.	473.07
R175039	301309	3/4 HP Sea Horse 76 GPM, 115V, 60HZ	1 1/2" FPT	1 1/2" FPT	1	24 lbs.	442.12
R175301	022891	3/4 HP Self Prime Pump 58 GPM, 230V, 50HZ	1 1/2" FPT	1 1/2" FPT	1	24 lbs.	481.84
R175040	301316	1 HP Sea Horse 82 GPM, 115V, 60HZ	1 1/2" FPT	1 1/2" FPT	1	26 lbs.	453.24
R175302	022907	1 HP Sea Horse 65 GPM, 230V, 50HZ	1 1/2" FPT	1 1/2" FPT	1	26 lbs.	500.99
R354545sw	023164	Shaft Seal for all Sea Horse (1/6 HP to 1 HP) Self Priming Pumps (salt water safe)					49.89

\$25.00 Labor Charge to install Saltwater Shaft Seal

FPT means Female Pipe Thread, MPT means Male Pipe Thread

LIFEGARD® SEA FLOW® HIGH PERFORMANCE PUMPS

R175316	311087	1/2 HP Sea Flow 89 GPM, 230V, 50/60HZ	2" FPT	2" FPT	1	41 lbs.	803.62
R175317	311100	3/4 HP Sea Flow 95 GPM, 230V, 50/60HZ	2" FPT	2" FPT	1	41 lbs.	834.12
R175318	311124	1 HP Sea Flow 113 GPM, 230V, 50/60HZ	2" FPT	2" FPT	1	46 lbs.	901.41
R175295	022860	1 1/2 HP Sea Flow 130 GPM, 230V, 50/60HZ	2" FPT	2" FPT	1	54 lbs.	1019.22
R175314	023027	2 HP Sea Flow 140 GPM, 230V, 50/60HZ	2" FPT	2" FPT	1	55 lbs.	1198.49
R175315	023034	3 HP Sea Flow 160 GPM, 230V, 50/60HZ	2" FPT	2" FPT	1	56 lbs.	1466.00
R071734sw	501075	Shaft Seal for all Sea Flow (1/2 HP to 3 HP) Self Priming Pumps (salt water safe)			1	1 lb.	49.89
072927sw	302030	Diffuser with #316 SS Ring (1/2 HP to 2 HP Sea Flow Pumps)*					98.77
072928sw	302047	Diffuser with #316 SS Ring (3 HP Sea Flow Pump)*					109.07

\$25.00 Labor Charge to install Saltwater Diffuser and/or Shaft Seal

*Must purchase pump with diffuser installed. Diffuser not sold separately.

INTELLIFLO® PUMP

Part Number	UPC 788379+	Model	Std. Carton	Shipping Weight	List Price
An intelligent, variable drive pump for water features, ponds and waterfalls. Can be sized for any job using simple gallons-per-minute or desired water turnover data of up to 160 GPM. Simply program pump speed to suit the application. Intelliflo then dials in the perfect power factor, delivering efficiency never before possible.					
011012	691370	Intelliflo Pump, variable drive	1	47 lbs.	2805.97
011018	723613	Intelliflo 8-Speed Pump, 230V, 16 amp, 140 GPM	1	47 lbs.	2351.82

\$25.00 Labor Charge to install Saltwater Diffuser and/or Shaft Seal

2-SPEED PUMP

340203	654757	3/4 HP Dynamo Pump 65/20 GPM, 115V, 8.8/2.6 amps	1	33 lbs.	550.69
--------	--------	--	---	---------	--------

EQ SERIES® and EQW SERIES® PUMPS

340026	690373	EQW 300, 3 HP, 450 GPM, 115V/230V, 60HZ	1	126 lbs.	7369.95
340027	690380	EQWK 300, 3 HP, 450 GPM, 460V/230-208V, 60HZ	1	106 lbs.	7275.30
340028	689629	EQW 500, 5 HP, 675 GPM, 230V, 60HZ	1	126 lbs.	8541.19
340029	724412	EQWK 500, 5 HP, 675 GPM, 460/230-208V, 60HZ	1	126 lbs.	7715.23
340030	690397	EQ 500, 5 HP, 405 GPM, 230V, 60HZ	1	126 lbs.	6852.95
340031	690403	EQK 500, 5 HP, 405 GPM, 460V/230-208V, 60HZ	1	106 lbs.	6659.23
340032	690410	EQ 750, 7 1/2 HP, 555 GPM, 230V, 60HZ	1	161 lbs.	7160.29
340033	690427	EQK 750, 7 1/2 HP, 555 GPM, 460V/230-208V, 60HZ	1	116 lbs.	6944.93
340034	690434	EQK 1000, 10 HP, 605 GPM, 460V/230-208V, 60HZ	1	126 lbs.	7737.26
340035	690441	EQK 1500, 15 HP, 820 GPM, 460V/230-208V, 60HZ	1	161 lbs.	8080.59

WATERFALL SPECIALTY PUMPS (EXTERNAL)

Designed for specific demands of water features such as fountains and waterfalls. For low head applications that require a flow rate between 35-180 gpm. 60% quieter and uses 60% less energy than other pumps. Features extra large strainer basket with transparent strainer pot lid and comfortable handle for easy access.

340350	654962	AFP-75, 85 GPM, 115V/230V, 8/4 Amps	2" Inlet	2" Outlet	1	40 lbs.	958.94
340351	654979	AFP-120, 120 GPM, 115V/230V, 8/4 Amps	2" Inlet	2" Outlet	1	40 lbs.	1051.97
340352	654986	AFP-150, 160 GPM, 115V/230V, 14/7 Amps	2" Inlet	2" Outlet	1	43 lbs.	1237.10
340353	654993	AFP-180, 180 GPM, 115V/230V, 14/7 Amps	3" Inlet	2" Outlet	1	46 lbs.	1662.03

LIFEGARD® UTILITY PUMPS



Part Number	UPC 788379+	Model	Suction	Discharge	Std. Carton	Shipping Weight	List Price
R172720	024024	1/6 HP Smart Pump, 15 GPM, 115V, 60HZ	Screen	5/8" GHT	1	6 lbs.	302.53
R172730	024031	1/6 HP Utility Pump, 20 GPM, 115V, 60HZ	Screen	5/8" GHT	1	7 lbs.	151.69
R440466	313142	Lifeguard Utility Pump, 793 GPH. (will drain to 1/8" or less)	Screen	3/4" GHT	4	25 lbs.	157.04

DIRTY WATER PUMPS (SUBMERSIBLE WATERFALL/UTILITY PUMPS)



Designed for medium to large ponds or for dirty water. Create streams, waterfalls, or use in conjunction with external filters or skimmers. Features anti-clog system which allows pump to clean itself of debris up to 8mm thickness.

R440467	313159	Submersible WaterFall/Utility Pump 978 gph			9	47 lbs.	154.54
R440468	313166	Submersible WaterFall/Utility Pump 1430 gph			4	38 lbs.	267.51
R440469	313173	Submersible WaterFall/Utility Pump 2100 gph			4	45 lbs.	359.55
R440470	313180	Submersible WaterFall/Utility Pump 2780 gph with on/off low water sensor			4	47 lbs.	547.66

LIFEGARD CAGED POND PUMPS



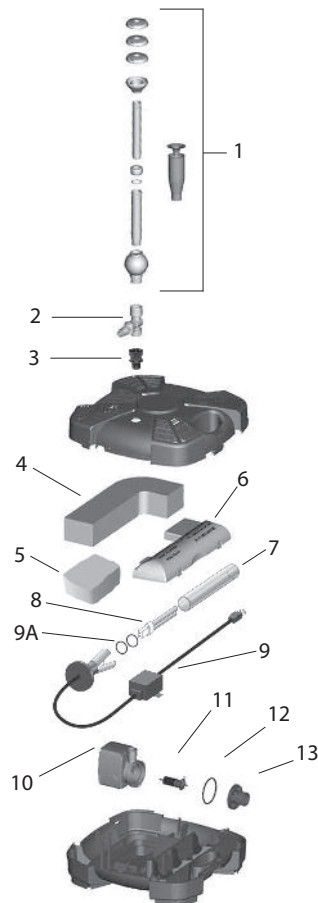
Double screen protection on intake prevents premature clogging of pump and nozzles. No sponge pre-filter reduces maintenance. Handles solids with vortex impeller. Top or Side discharge and adjustable grid to protect small fish on 4000 and 5000 models. 4 different nozzles, with telescopic tube and diverter valve. For continuous use. Thermally protected and easy to service.

R440456	313043	304 Model, 304 gph			6	21 lbs.	95.98
R440457	313050	650 Model, 650 gph			3	14 lbs.	121.28
R440458	313067	1004 Model, 1004 gph			4	28 lbs.	176.80
R440459	313074	1268 Model, 1268 gph			4	33 lbs.	203.83

ALL-IN-ONE® POND FILTER SYSTEM



Part Number	UPC 788379+	Description	Std. Carton	Shpg. Wgt.	List Price
R440430	312626	ALL-IN-ONE FILTER, 15"L x 15"W x 6"H	2	31 lbs.	327.36



ALL-IN-ONE® POND FILTER SYSTEM PARTS

Item	Part No.	UPC 788379+	DESCRIPTION	List Price
1	R440435	312794	Fountain Kit	15.91
2	R440439	312800	Diverter Valve	2.67
3	R440440	312817	Fitting	2.18
4	R440446	312824	Mechanical Filter Sponge Media	16.62
5	R440447	312831	Biological Filter Media	13.63
6	R440448	312848	UV Cover Housing	10.78
7	R440436	312855	Quartz Sleeve	36.16
8	R440437	312862	UV Replacement Bulb	45.02
9	R440438	312879	Ballast Assembly	69.55
9A	R440449	312633	Quartz Sleeve "O" Ring	2.75
10	R440442	312886	Pump, 679 gph	62.97
11	R440443	312893	Pump Impeller/Shaft/Bushing	21.36
12	R440444	312909	Pump "O" Ring	1.05
13	R440445	312916	Pump, Front Housing	2.46



UNO, DUO, TRIO® POND FILTER/FILTER, PUMP KITS



Lifeguard Submersible Pond Filters combine multi chambers that filter pollutants out of pond water through mechanical and biological means. The long lasting Mechanical Sponge Filter is easily cleaned, while the Biological Sponge can be replaced by many other types of media if desired. Available in single, double and triple modules for use in small, medium or large size ponds.

Part Number	UPC 788379+	Description	Std. Carton	Shpg. Wgt.	List Price
-------------	----------------	-------------	-------------	------------	------------

Pond Filters, for use with any make pump. Include Mechanical and Biological Filtration Modules, 360° Rotating Outlet, 1" Kink Resistant Hose, and Suction from Side to reduce clogging.

R440011	502249	UNO POND FILTER, Ponds up to 1000 Gallons/3800 Liters	6	19 lbs.	67.97
R440012	502263	DUO POND FILTER, Ponds up to 1700 Gallons/6460 Liters	4	16 lbs.	88.69
R440013	502270	TRIO POND FILTER, Ponds up to 2500 Gallons/9500 Liters	4	18 lbs.	108.44

Pond Filter Kit . . . including Quiet One® Pump and Mechanical and Biological Filtration Modules, 360° Rotating Outlet, 1" Kink Resistant Hose, and Suction from Side to reduce clogging.



115 VOLT POND FILTER KITS

R440021	502355	UNO POND FILTER KIT, includes Quiet One 4000 Pump	6	43 lbs.	181.65
R440022	502362	DUO POND FILTER KIT, includes Quiet One 4000 Pump	4	32 lbs.	203.27
R440023	502379	TRIO POND FILTER KIT, includes Quiet One 6000 Pump	4	46 lbs.	279.70

PARTS

R440024	502386	REPLACEMENT SPONGE CARTRIDGE	6	7 lbs.	24.99
R440026	310790	UNO+ REPLACEMENT SPONGE SET	6	4 lbs.	16.33



LIFEGARD® TARPON® POND FILTER SYSTEM

Part No.	UPC 788379+	Description	GPM	Height	Diam.	Std Ctn.	Ship Wt.	List Price
Includes Multiport Valve, High Flow Pond Laterals and 1" Bio-Mate® Media								
R440640	313258	Tarpon 40 Pond Filter with Bio Mate media	40	37"	19"	1	77 lbs.	1203.17
R440641	313265	Tarpon 50 Pond Filter with Bio Mate media	50	38½"	21"	1	82 lbs.	1225.63
R440642	313272	Tarpon 60 Pond Filter with Bio Mate media	60	41¼"	24"	1	85 lbs.	1243.80
R152901c	791315	Base and Hose Kit for Tarpon Filters				1	6.2 lbs.	137.10
150086A	314187	Skeleton Laterals (convert your sand filter into a pond filter)				1	6.2 lbs.	8.00

For complete system add Filter, Base and Hose Kit and Pump.



Skeleton Laterals
(convert your sand
filter into a pond filter)

POND MAINTENANCE PRODUCTS

For Algae Control see LIFEGARD ULTRAVIOLET Sterilizer MODULE Section ON PAGE #5.

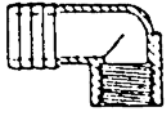
Part Number	UPC 788379+	Description	Std. Carton	Shpg. Wgt.	List Price
R500080	005009	POND BRUSH 18" polished metal back and UV stabilized poly bristles. Fits standard poles.	12	12 lbs.	12.36
R121166	001346	HAND SKIMMER. Polyester screen molded into polypropylene frame. Snap-adapt handle fits 4' or 6' PVC handle. Complete with magnet. Perfect for removing floating debris, leaves, etc.	12	7 lbs.	14.68
R121186	001353	LONG HANDLE SKIMMER. Hand skimmer attached to 1" x 4' aluminum pole. Includes pole cap and magnet. Use to remove floating debris, leaves, etc. from pond.	12	12 lbs.	21.90
R121230	001414	PRO POND NET. Has replaceable frame with wear resistant deep netting. Frame 'snaps' onto 3/8" solid anodized aluminum rod. Snap-adapt handle and replaceable squeegee strip for scraping bottoms.	12	18 lbs.	53.05
R440015	502294	TUBE THERMOMETER. ABS molded tube. Thermometer sealed in blown glass tube. °F and °C scales with 3' polyethylene rope. Bulk pack.	24	4 lbs.	9.35
R440016	502300	E-Z READ POND THERMOMETER. Includes flotation cap, magnifying lens and cord.	24	8 lbs.	13.15
R191066	006037	TELESCOPIC POLE. 2 PIECE EXTENDS TO 7 1/2'. High quality drawn aluminum tubing. Positive locking plastic cams.	12	15 lbs.	18.96
R191128	006150	PVC HANDLE. 1 1/4" x 6' with pole cap.	12	8 lbs.	21.90
R201144	308421	MINI-VAC®. Designed for use with garden hose or 1 1/4" or 1 1/2" vacuum hose. Complete with collector bag and hose adapter. Has both brush attachment for fiber glass, vinyl or smooth surfaces and nozzle / wheel attachment for rough surfaces. Snap-adapt handle. Fits 4' or 6' PVC handle.	12	15 lbs.	28.96
R201718	007072	REPLACEMENT BAGS FOR MINI-VAC™. 2 per bubble pack.	24	4 lbs.	28.90
R201716	007065	SILT SOCKS FOR MINI-VAC®. 3 per bubble pack	24	4 lbs.	7.51
R211044	014827	LEAF EATER®. Works with garden hose to remove large debris and leaves from ponds. Wheels swivel for ease of turning on bottom. Large mesh bag. Brushes included for vinyl liner ponds.	6	21 lbs.	52.43
R211426	007416	STANDARD MESH BAG FOR LEAF LEATER	1	1 lb.	10.49
R211286	007386	SAND/SILT BAG FOR LEAF EATER	1	1 lb.	18.02

POND WET OR DRY AIR PUMPS

R440454	313029	Wet/Dry Air Pump 300 with 20' cord (up to 90 gallon pond, maximum depth = 40", air flow = 80 gph)	8	27 lbs.	83.66
---------	--------	--	---	---------	--------------

FITTINGS / ADAPTERS / TUBING

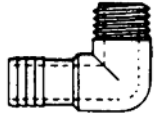
90° ELBOW



FPT X INSERT

PART	UPC 788379+	DESCRIPTION	STD. CARTON	SHPG. WGT.	LIST PRICE
R270481	304683	1/2"	50	5 lbs.	3.06
R270482	304690	3/4"	25	3 lbs.	3.68
R270483	304706	1"	25	4 lbs.	5.00

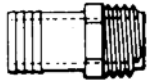
90° ELBOW



MPT X INSERT

R175103	301590	1/2"	25	1 lb.	3.97
R270479	304669	3/4"	25	2 lbs.	5.25
R270480	304676	1"	10	2 lbs.	7.02

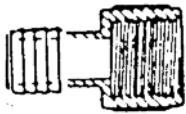
ADAPTER



MALE INSERT

R175002	300821	1/2"	50	3 lbs.	1.39
R270314	303969	3/4"	50	3 lbs.	1.72
R175003	300845	1"	50	4 lbs.	2.13

ADAPTER



FEMALE INSERT

R175138	301866	1/2"	30	2 lbs.	6.02
R270477	304645	3/4"	30	2 lbs.	7.29
R270478	304652	1"	30	3 lbs.	8.52

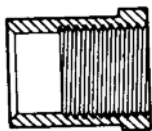
NIPPLE



MPT X CLOSE

PART	UPC 788379+	DESCRIPTION	STD. CARTON	SHPG. WGT.	LIST PRICE
R175008	300890	1/2"	50	1 lb.	1.01
R270313	303952	3/4"	50	2 lbs.	1.29
R270484	304713	1"	50	3 lbs.	1.54

BUSHING



SLIP X THREAD

R175005	300869	1"x1/2"	25	2 lbs.	3.46
R175053	301392	1"x3/4"	25	2 lbs.	3.46
R175006	300876	1 1/4"x1/2"	25	3 lbs.	5.54
R175051	301385	1 1/4"x3/4"	25	3 lbs.	5.54

HOSE CLAMP

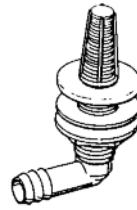


STAINLESS STEEL

R175013	300982	9/16"	24	1 lb.	1.97
R175014	301002	3/4"-1"	24	2 lbs.	2.52

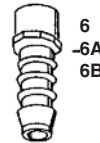
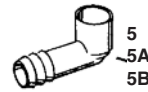
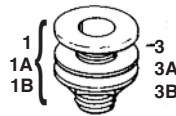
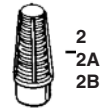
LIFEGARD BULKHEAD FITTING KIT

PART	UPC 788379+	DESCRIPTION	STD. CARTON	SHPG. WGT.	LIST PRICE
R270578	305550	1/2" Slip Bulkhead Kit Assembly 1 1/8" hole	200	20 lbs.	6.67
R270600	305727	3/4" Slip Bulkhead Kit Assembly 1 1/2" hole	100	20 lbs.	7.13
R270579	305574	1" Slip Bulkhead Kit Assembly 1 1/2" hole	70	20 lbs.	8.13



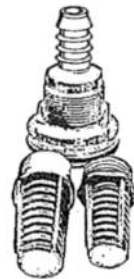
LIFEGARD® SLIP BULKHEAD FITTINGS AND PARTS

1	R270576	305512	1/2" slip bulkhead w/nut & gasket 1 1/8" hole	300	26 lbs.	4.87
1A	R270590	305635	3/4" slip bulkhead w/nut & gasket 1 1/2" hole	200	24 lbs.	5.36
1B	R270577	305536	1" slip bulkhead w/nut & gasket 1 3/4" hole	100	20 lbs.	5.80
2	R270565	305437	1/2" suction screen	1100	20 lbs.	1.07
2A	R270599	305703	3/4" suction screen	500	28 lbs.	1.28
2B	R270570	305475	1" suction screen	300	13 lbs.	1.31
3	R270567	305444	1/2" bulkhead gasket	100	1 lb.	.46
3A	R270597	305697	3/4" bulkhead gasket	100	1 lb.	.52
3B	R270572	305482	1" bulkhead gasket	100	2 lbs.	.57
5	R270569	305468	1/2" fit x insert 90°	100	4 lbs.	1.62
5A	R270595	305659	3/4" fit x insert 90°	400	24 lbs.	1.87
5B	R270574	305505	1" fit x insert 90°	300	22 lbs.	2.23
*6	R270601	305741	1/2" fit x insert	100	4 lbs.	1.93
*6A	R270602	305758	3/4" fit x insert	100	5 lbs.	2.34
*6B	R270603	305765	1" fit x 3/4" insert	100	8 lbs.	2.48



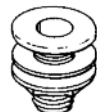
LIFEGARD® INSERT BULKHEAD FIT KIT

R270650	311964	1/2" slip bulkhead kit w/insert 1 1/8" hole	250	31 lbs.	6.80
R270651	311957	3/4" slip bulkhead kit w/insert 1 1/2" hole	150	31 lbs.	7.69
R270652	311940	1" slip bulkhead kit w/insert 1 3/4" hole	100	32 lbs.	8.28
R270653	312008	1/2" FPT bulkhead kit w/insert	250	31 lbs.	7.75
R270654	311995	3/4" FPT bulkhead kit w/insert	150	31 lbs.	8.31
R270655	311988	1" FPT bulkhead kit w/insert	100	32 lbs.	9.59



LIFEGARD® BOTTOM THREADED BULKHEAD

R270906	300517	1" Bottom Thread	150	29 lbs.	7.11
---------	--------	------------------	-----	---------	------



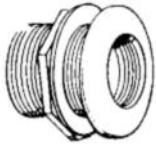
LIFEGARD® AIRLINE BULKHEAD KIT

Inject air through aquarium tank wall to hide unsightly airline tubing, 1 1/2" diameter hole required. All parts included.

R270592	314385	Airline Bulkhead Kit	60	19 lbs.	16.67
R270790	314392	Airline Tubing 10'			1.67
R270591	314415	Check Valve			2.00
R270593	314422	Elbow			1.00

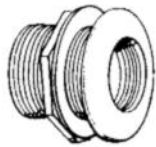


FITTINGS / TUBING



**LIFEGARD® DOUBLE
THREADED BULKHEADS**
THREADED ON INSIDE AND OUTSIDE!

PART	UPC 788379+	DESCRIPTION	STD. CARTON	SHPG. WGT.	LIST PRICE
R270900	307370	1/2" All FPT Bulkhead	300	23 lbs.	5.82
R270904	307394	3/4" All FPT Bulkhead	200	26 lbs.	5.98
R270902	307387	1" All FPT Bulkhead	150	31 lbs.	7.11



**STANDARD THREADED
BULKHEAD FITTING**

PART	UPC 788379+	DESCRIPTION	STD. CARTON	SHPG. WGT.	LIST PRICE
R175141	301873	1/2" (1 1/16"-1 1/8" hole)	200	12 lbs.	6.62
R175142	300081	3/4" (1 5/8"-1 3/4" hole)	100	16 lbs.	7.11
R175106	301620	1" (1 5/8"-1 3/4" hole)	100	16 lbs.	8.18
R172334	300746	1 1/2" (2 3/8" hole)	50	20 lbs.	9.15
R270560	305413	2" (3" hole)	56	22 lbs.	13.29



**THREADED SUCTION/
OVERFLOW STRAINER**

R270554	305369	1/2"	1000	20 lbs.	2.31
R270556	305383	3/4"	600	16 lbs.	2.46
R175251	302221	1"	500	20 lbs.	3.44
R270557	305390	1 1/2"	216	20 lbs.	5.21
R270561	305420	2"	144	20 lbs.	9.87



HOSE BIB

R175009	300913	1/2" GHT Plastic Hose Bib	36	51 lbs.	7.35
R175010	313487	Hose Bib Cap With Gasket	25	21 lbs.	5.47



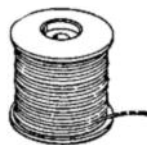
**SILICONE
LUBRICANT**

R172036X	004620	Silicone Lubricant (1 per poly bag)	96	8 lbs.	5.77
----------	--------	--	----	--------	------



**THREAD
SEAL TAPE**

R175163	501150	Thread Seal Tape			.85
---------	--------	------------------	--	--	-----



**NEW LIFEGARD®
AIRLINE TUBING**

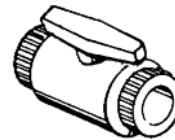
R270790	314392	Airline Tubing 10'			1.67
R270789	314408	Airline Tubing 300' Coil			36.89

**METRIC BUSHINGS
AND ADAPTERS**

New Metric Bushings will glue into the inlet and outlet side of the AF-Series Mechanical, Chemical, Heater, and UV Sterilizer allowing the customers to glue on various metric pipe sizes. The fitting can also be used in the Lifeguard 1/2", 3/4" and 1" Slip Bulkhead Fitting

R510142	500924	1/2" Slip x 20/25mm	250	8 lbs.	1.50
R510143	500948	3/4" Slip x 20/25mm	250	8 lbs.	2.04
R510144	500962	1" Slip x 25/32mm	250	10 lbs.	2.54
R510145	500993	1 1/4" Slip x 25/32mm	250	10 lbs.	3.09

SLIP



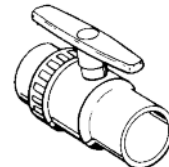
BALL VALVE
ECONOMICAL, HIGH PERFORMANCE
FULL FLOW VALVE WITH
LEAK TIGHT SHUT OFF.

PART	UPC 788379+	DESCRIP- TION	STD. CARTON	SHPG. WGT.	LIST PRICE
R270512	304973	1 1/2"	6	7 lbs.	32.08
R270513	304980	2"	6	10 lbs.	39.74

THREADED

R175079	301538	1/2"	10	3 lbs.	9.34
R175080	301545	3/4"	10	4 lbs.	10.51
R270509	3014942	1"	10	6 lbs.	14.00
R270510	304959	1 1/2"	6	7 lbs.	32.08
R270511	304966	2"	6	6 lbs.	40.01

SLIP

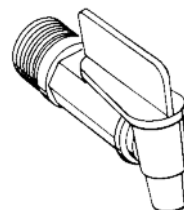


**SINGLE UNION
BALL VALVE**
FOR APPLICATION WHERE SPACE
IS LIMITED AND DOUBLE UNIONS
ARE NOT REQUIRED.

R270517	305024	1"	10	8 lbs.	34.90
R270518	305031	1 1/2"	6	12 lbs.	69.85
R270519	305048	2"	6	18 lbs.	93.65

THREADED

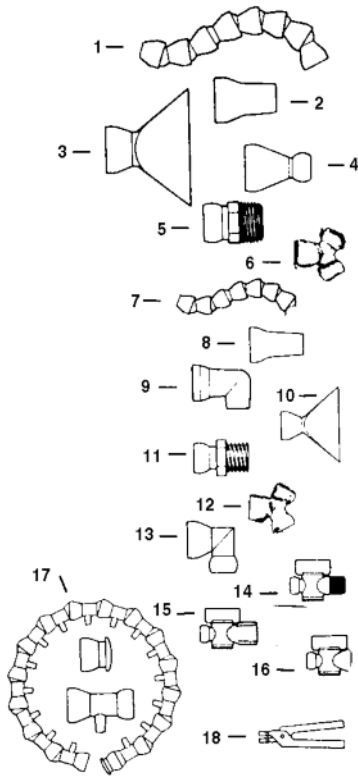
R270520	305055	1/2"	10	4 lbs.	21.23
R270521	305062	3/4"	10	5 lbs.	25.13
R270522	305079	1"	10	7 lbs.	35.25
R270523	305086	1 1/2"	6	12 lbs.	69.85
R270524	305093	2"	6	18 lbs.	92.48



FILL VALVES
ECONOMICAL,
INSTANT OPEN
OR SHUT CONTROL
FOR
WATER DISTRIBUTION.
LOW PRESSURE USE ONLY.

PART	UPC 788379+	DESCRIP- TION	STD. CARTON	SHPG. WGT.	LIST PRICE
R175252	302238	3/4"	24	3 lbs.	3.51

FLEXIBLE BALL-SOCKET JOINT TUBING AND ACCESSORIES



Item	Part Number	UPC 788379+	DESCRIPTION	Std. Carton	Shpg. Wgt.	List Price
1	R270850	306526	3/4" ID Flexible Ball-Socket Joint Tubing. Approximately 6" in length. 54 pieces per 25' box.	54	7 lbs.	6.00
2	R270851	306533	3/4" Round Nozzle.	50	2 lbs.	1.97
3	R270852	306540	3/4" x 3" Flare Nozzle.	20	1 lb.	5.79
4	R270853	306557	3/4" to 1/2" Adapter.	20	1 lb.	4.07
5	R270854	306564	3/4" MPT Connector.	50	2 lbs.	1.97
6	R270855	306571	3/4" Y Fitting.	20	1 lb.	5.79
	R270877	309268	3/4" S x S Connector			2.86
	R270878	309275	3/4" 90 Degree Elbow	20	1 lb.	4.91
	R270879	309282	3/4" In-Line Valve	10	2 lbs.	13.07
	R270880	309299	3/4" MPT Valve	10	2 lbs.	13.07
	R270881	309305	3/4" FPT Valve	10	2 lbs.	13.07
	R270882	309312	3/4" Pliers	1	1 lb.	30.24
7	R270856	306588	1/2" ID Flexible Ball-Socket Joint Tubing. Approximately 6" in length. 59 pieces per 25' box.	59	5 lbs.	4.77
8	R270857	306595	1/2" Round Nozzle.	50	1 lb.	1.56
9	R270858	306601	1/2" 90° Nozzle.	20	1 lb.	2.21
10	R270859	306618	1/2" x 1 1/4" Flare Nozzle.	20	1 lb.	3.87
11	R270860	306625	1/2" MPT Connector.	50	3 lbs.	1.56
12	R270861	306632	1/2" Y Fitting.	20	2 lbs.	3.87
13	R270862	306649	1/2" Elbow Fitting.	20	1 lb.	3.60
14	R270863	306656	1/2" MPT Valve.	10	1 lb.	9.98
15	R270864	306663	1/2" FPT Valve.	10	1 lb.	9.98
16	R270865	306670	1/2" In-line Valve.	10	1 lb.	9.98
17	R270866	306687	1/2" Circle Flow Assembly.	1	1 lb.	36.54
	R270869	314194	1/2" End Cap for Circle Flow Assembly.			1.59
18	R270867	306694	1/2" Assembly Pliers (no 3/4" pliers available).	1	1 lb.	20.26
	R270883	309329	1/2" S x S			2.34

SERVICE CART PARTS KIT

NOW YOU CAN BUILD YOUR OWN SERVICE CART.

Order No.: R440650

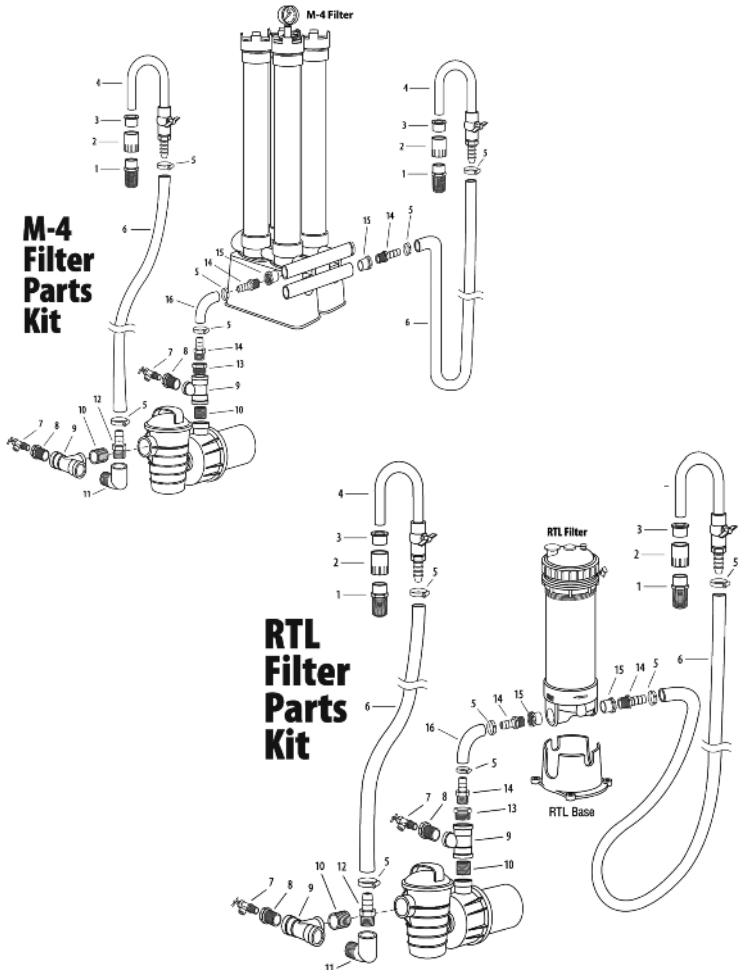
Description: SERVICE CART PARTS KIT

Choose a **pump** ... choose a **filter** ... add a **Lifeguard Service Cart Parts Kit** that includes flexible hoses, u-tubes with valves, basket suction diffusers and all plumbing parts to connect pump and filter. Select a **rolling cart** from local hardware store and assemble your own service cart. Clean aquariums fast and efficiently.

Item	Qty.	Part No.	UPC 788379+	DESCRIPTION	Std. Carton	Weight (lbs)	List Price
		R440650	312756	Service Cart Parts Kit	1	10	233.26

The Service Cart Parts Kit includes the following items:

1	2	R270561	305420	2" Suction Strainer			10.39
2	2	R270471	304584	2" FPT x 2" Slip Adapter			2.47
3	2	R270408	304041	2" Slip x 1" Slip Reducer Bushing			2.54
4	2	R175019	301088	U-Tube w/1" Ball Valve & 1" Insert Adapter			24.43
5	6	R175014	301002	Hose Clamps			2.52
6	2	R175012	300975	1" ID x 10' Flex Hose			34.57
7	2	R175009	300913	1/2" Hose Bib			7.36
8	2	R175007	300883	1 1/2" MPT x 1/2" FPT Reducer Bushing			3.49
9	2	R270465	304522	Tee, Threaded 1 1/2" FPT			8.31
10*	2	R270485	304720	1 1/2" Nipple			2.36
11	1	R175206	301996	1 1/2" Elbow MPT x Slip			4.19
12	1	R273026	010287	1 1/2" FIT x 1" Hose Barb Male Insert Adapter			5.86
13	1	R270420	304157	1 1/2" MPT x 1" FPT Bushing			5.67
14	3	R175003	300845	1" MPT x 1" Hose Barb Male Insert Adapter			2.13
15	2	R270412	304089	2" Slip FIT x 1" FPT Bushing			4.09
16	1	R175012A	010300	Flex Pipe, PVC 1" x 2'			11.78





13911 Struikman Road, Cerritos, CA 90703
Phone: (562) 404-4129 (800) 628-8771
Fax: (562) 404-4159 (800) 424-1445
www.lifegardaquatics.com • E-mail info@lifegardaquatics.com

CUSTOM FILTRATION SYSTEM

Let LIFEGARD AQUATICS help you custom design your filtration system.
Please FAX the following information for a FREE ESTIMATE.

FAX #800-424-1445

COMPANY NAME: _____

BUYER'S NAME: _____

ADDRESS: _____

CITY: _____ STATE: _____

ZIP: _____ E-MAIL: _____

TELEPHONE: _____ FAX: _____

INDIVIDUAL SYSTEM

- Fresh Water Salt Water Glass Aquarium Acrylic Aquarium

PLUMBING:

- Over the side / back Through the tank bottom (Holes must be drilled tank for this type of installation)

INDICATE HOLE SIZE IF TANK IS PREDRILLED: _____

TYPE OF AQUARIUM INHABITANTS: _____

TANK DIMENSION (inside dimension in inches—L x W x H): _____

TOTAL VOLUME OF WATER: _____

DIMENSION OF AREA WHERE FILTER SYSTEM IS TO BE INSTALLED (L x W x H, inside dimension inches)

MULTIPLE TANK SYSTEM

- Fresh Water Salt Water Glass Aquariums Acrylic Aquariums

INDICATE HOLE SIZE IF TANKS ARE PREDRILLED: _____

TYPE OF AQUARIUM INHABITANTS: _____

NUMBER OF TANKS: _____ SIZE OF TANKS: _____

RESERVOIR SIZE: _____ TOTAL VOLUME OF WATER: _____

DISTANCE FROM PUMP TO WATER LEVEL OF TOP ROW: _____

DIMENSION OF AREA WHERE FILTER SYSTEM IS TO BE INSTALLED (L x W x H, inside dimension inches)
